

TITAN BARATTO
CORNELY

CORNELY LG3
English
OPERATOR'S MANUAL



NV. A. DE KONINCK

Avenue Sleenckx 84-86

B-1030 BRUSSELS -BELGIUM

Phone : ++32/2 216 31 40 Fax : ++32/2 242 41 89

E-mail : info@titansew.com Web : www.titansew.com

CONTENT

CHAPTER 1 : INSTALLATION	2
1. Fly Wheel Rotation	2
2. Training	2
3. Sewing	2
CHAPTER 2 : MECHANICAL ADJUSTMENT	3
1. Needle Setting	3
2. Needle Bar Orientation	4
3. Needle Plate Setting	6
4. Feeddog Setting	6
5. Foot Pressure Adjustment	7
CHAPTER 3 : THREADING	8
CHAPTER 4 : STITCH LENGTH	14
CHAPTER 5 : THREAD TENSION	14
CHAPTER 6 : LUBRICATION	16
CHAPTER 7 : INSTALLATION OF THE BOBIN STAND	17
CHAPTER 8 : INSTALLATION OF THE EURAMOT MOTOR	18
CHAPTER 9 : SPARE PARTS MANUAL	19

CHAPTER 1 : INSTALLATION

FLY WHEEL ROTATION

While sitting in front of the machine and you put your hand on the top of the Fly Wheel you have to push the flying wheel away from you (backwards).
The Fly Wheel must turn clockwise. NEVER PULL !!

TRAINING

To use the Cornely LG3 is not that difficult, the only thing you have to do is practising.

You have to begin to sew on the piece of paper on which the design is drawn.

You have to follow this design by operating the crank.

The so called hook (=needle) will punch along this pre-traced design together with the movements of the Crank C.00797 (Fig. 1B).

After a while you can handle it perfectly.

TO START SEWING

You have to start the motor by pressing the pedal and the motor starts running.

The harder you push the faster the motor will run.

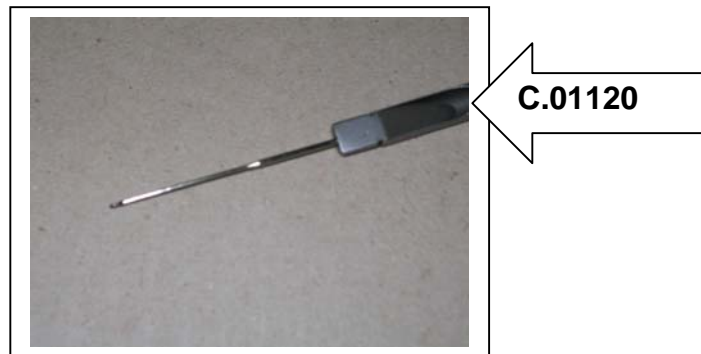
To stop the motor you have to release the pedal so the speed will decrease.

CHAPTER 2 : MECHANICAL ADJUSTMENT

1. NEEDLE SETTING

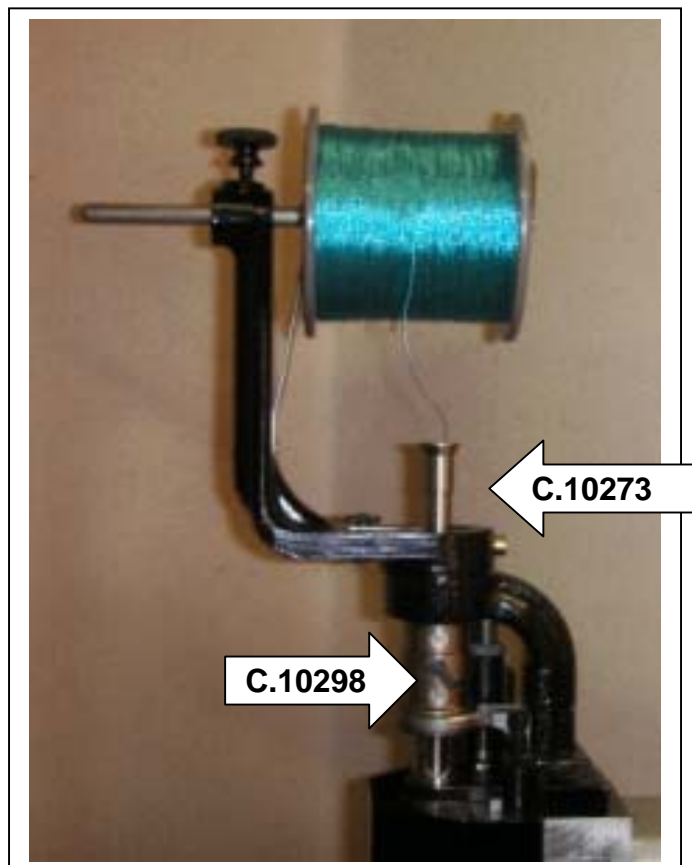
Select carefully the needle according the thickness of the thread.
Screw tightly the needle into the needle holder C.01120 by means of the flat
tweezer delivered with the accessories. The needle should be positioned in the flat
opening of the needle holder. (Fig. A)

FIG. A



The needle holder is passing through the tube C.10273 and should be placed in
the correct position with the screw C.10298 by hand and adjust the height so that
the material can slide under the needle without touching it. (Fig. B)

FIG. B



The needles have different sizes and named as :

Hook N° 1 : Part n° : C.0253SC070
Hook N° 2 : Part n° : C.0253SC080
Etc. C.0253SC090
C.0253SC100
C.0253SC110
C.0253SC120

The lower side of this hook is guide into C.00601. You have to adjust the lower guide so that the material can slide under needle without touching it.

You have different kind of guides according to the thickness of the hooks.

Guide Part n° : C.00601C01 for hook : C.0253SC070
C.00601C02 for hook : C.0253SC080
C.00601C03 for hook : C.0253SC090
C.00601C04 for hook : C.0253SC100
C.00601C05 for hook : C.0253SC110
C.00601C06 for hook : C.0253SC120

2. NEEDLE BAR ORIENTATION

The crank C.00797 and the hook and the cone lever C.10033 must be placed in the same direction. (Fig. 1A-1B)

This means for the **Chain-stitch** at 6 o'clock.



FIG. 1A

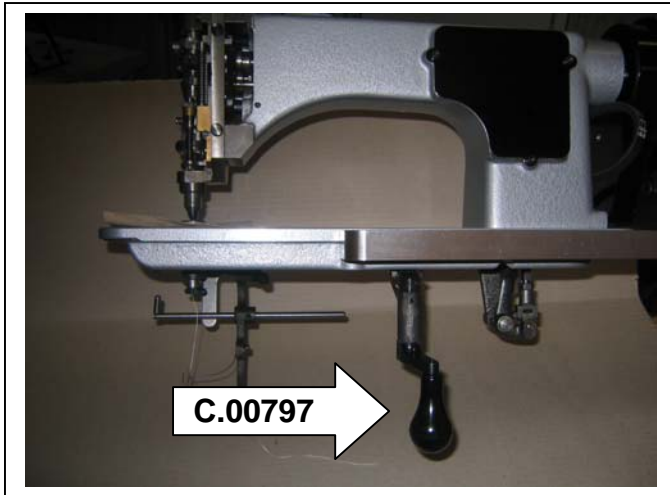


FIG. 1B

If you are sewing the **Moss-stitch**, you have to turn the hook 180 °.
This means : the hook at 12 o'clock and the crank at 6 o'clock and pulling the part C.10063 to the left and turning backwards. (Fig. 2)
The hook must be exactly in the opposite position as it was during the chain stitch work.

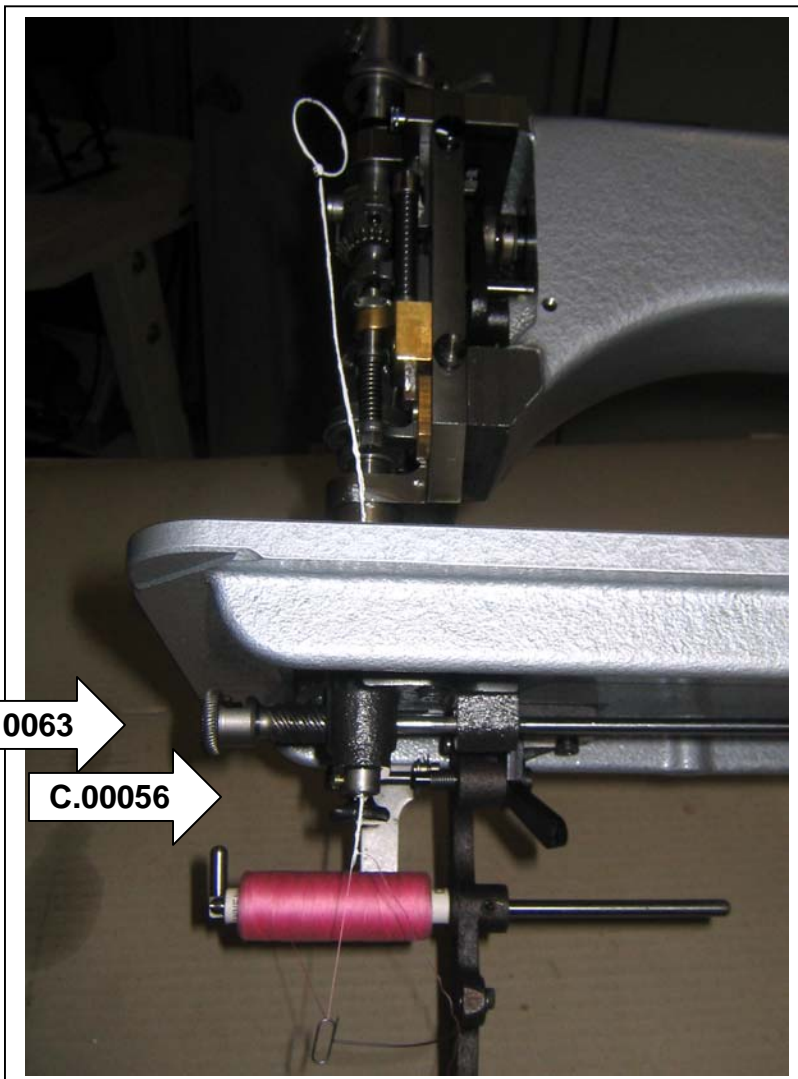


FIG. 2

3. NEEDLE PLATE SETTING

The needle should pass the needle plate in one of the 12 foreseen holes. Use the hole just in front from where the threaded needle is coming out of the needle plate.

Choose a convenient hole so that the needle can pass freely through the hole. The needle must be exactly in the middle of the hole.

Don't use too large holes, especially with thin material.

If this is not the case, do the following :

To turn the plate : C.01707 (Fig. 3), unscrew part C.00056 (Fig. 2) and use the curved point knife.

If the hole is correctly placed, screw part C.00056 again. (Fig.2)

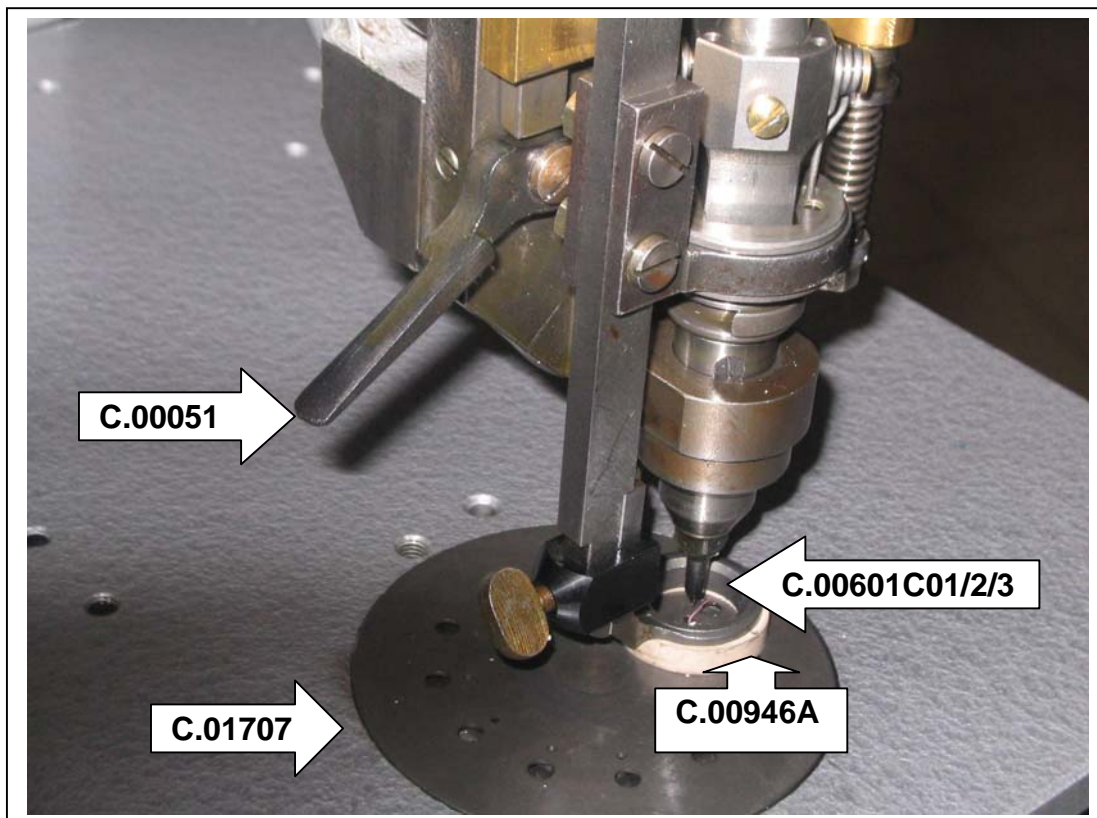


FIG. 3

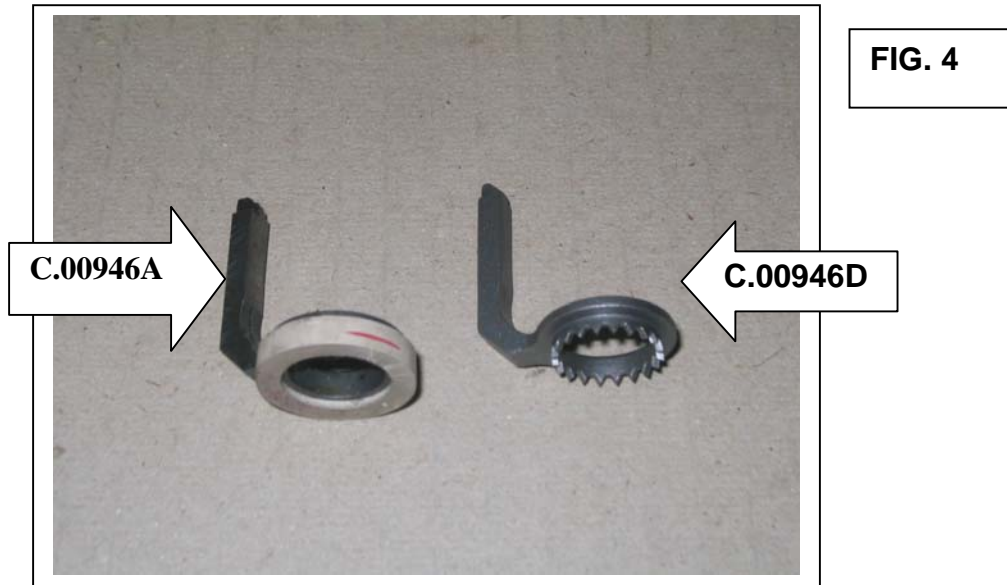
4.FEEDDOG SETTING

The Cornely LG3 is normally equipped with 1 rubber feeddog : C.00946A.

We are using the feeddog with teeth C.00946D when using hard fabric. The other feeddog is used for fine fabric. (Fig. 4)

By raising lever C.00051 (Fig. 3), you are moving the feeddog upwards.

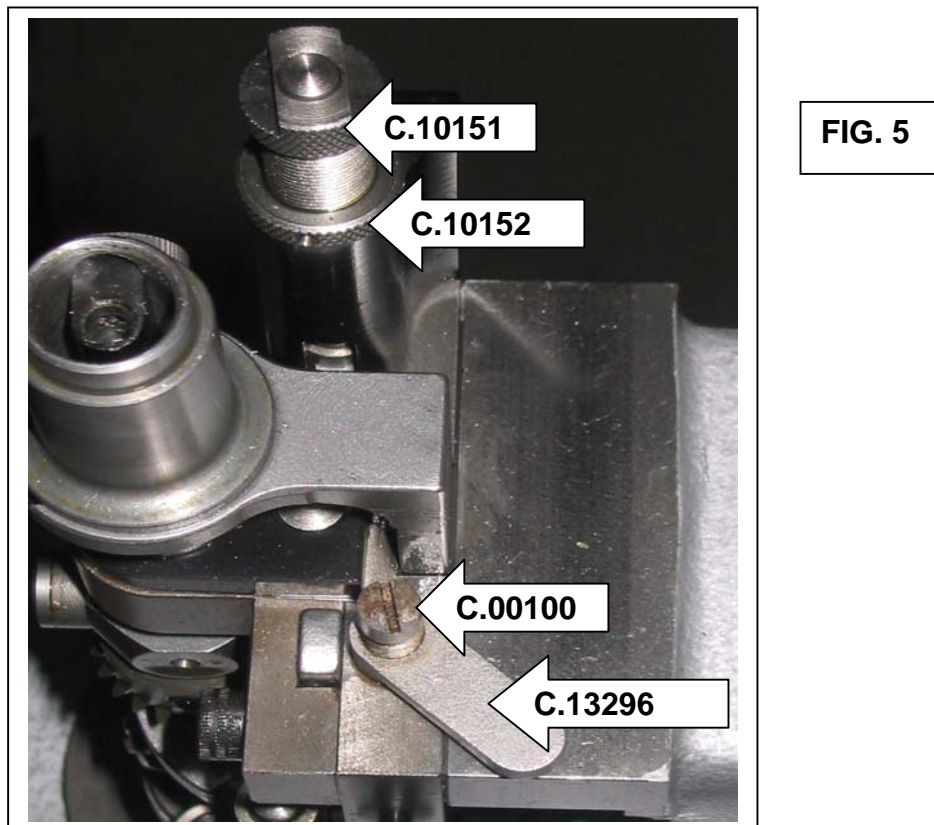
<u>FEEDDOG</u>	<u>RUBBER</u>
C.00946A	C.CA-26
C.00946D	
C.00946L	C.CA-28
C.01133	C.CA-33
C.01133D	



5. FOOT PRESSURE ADJUSTMENT

By unscrewing the nut : C.10152, you are regulating the tension in the C.10151, regulating bushing. (Fig. 5)

For very high speed, ask for the spring C.10154 instead of the spring C.10171 to increase the tension of the pressure foot



CHAPTER 3 : THREADING

The machine is supplied with spoolholder C.10011 (Fig. 6), which requires cylindrical spools.

We also have spoolholders for conical spools.

- a. The machine threading with a cylindrical spoolholder is the following :

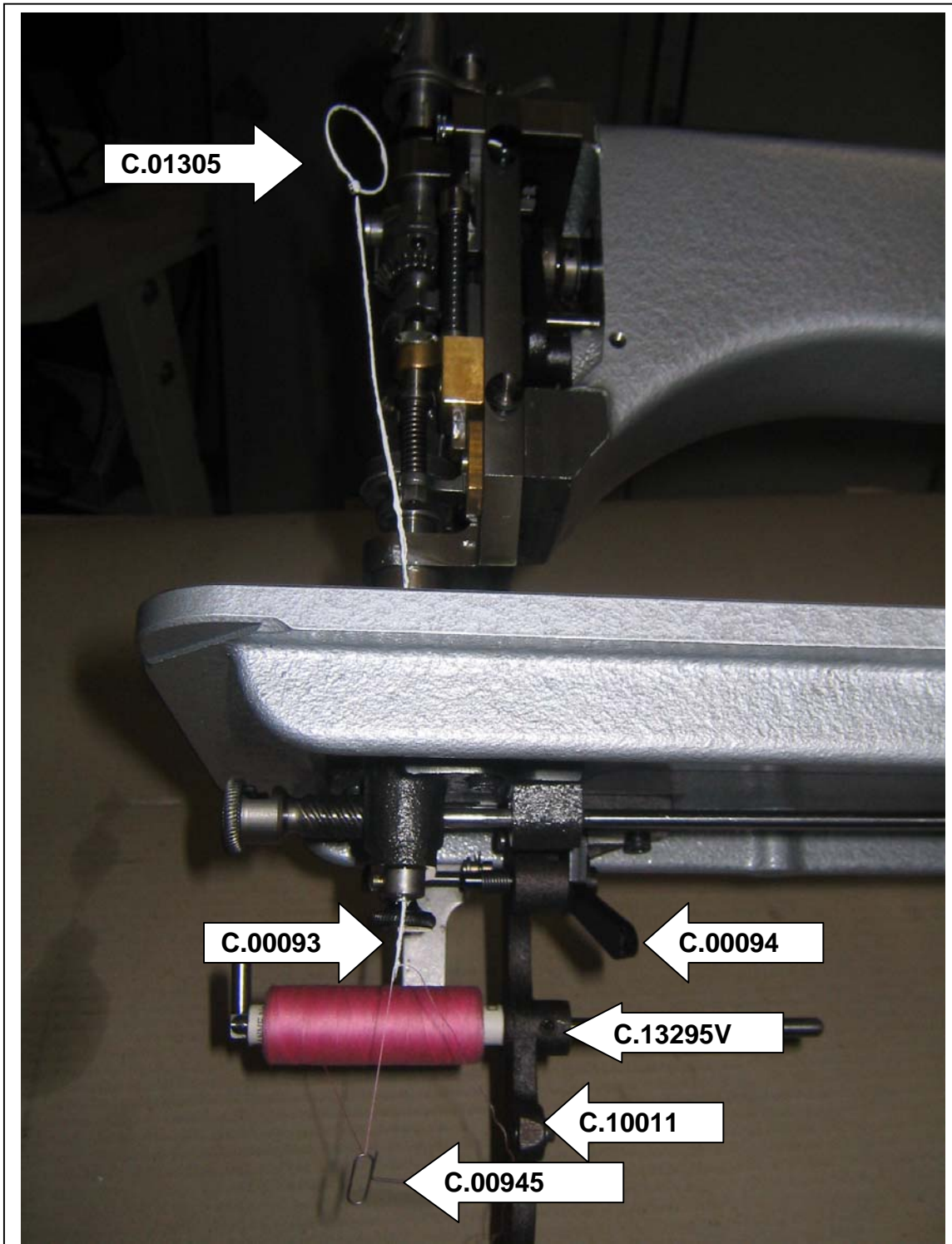


FIG. 6

Raise the pad, C.00093 (Fig. 6) insert the spool on the shaft and adjust nut screw C.13295V. Pull the thread through the eye of the tension spring C.00945. The thread must come from below the spool.
 Pass the thread hook C.01305 through the big hole of the needleplate C.01707 which is in front of the needle hole.
 Catch the thread and pull it up under the needleplate C.01707.
 Pass the thread under foot C.00946A which has been raised beforehand.
 The thread must be laying towards you.
 Start the motor while holding the thread on the table with your left hand as instructed above just the time to do one stitch so that the needle catches the thread and let it pass through the plate.
 Now, remove the thread from the needle with the curved knife and lay the thread on the table.
 The thread tension is adjusted by pad pressure.
 The spool tension can be regulated by raising the lever C.00094 (Fig. 6) or lower the lever C.00094.

b. The machine threading with a conical spoolholder is the following :

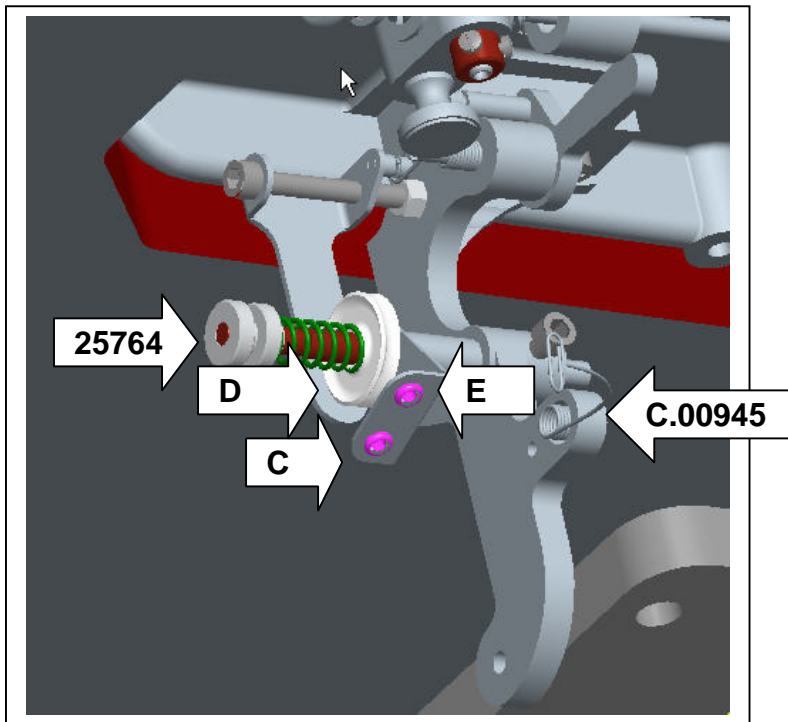


FIG. 7

Put the conical Bobbin on the spoolholder A.,(Fig. 8), put the yarn through the eye B (Fig. 8), pass through eye C (Fig. 7) between the tension disc D (Fig. 7) then pass through the eye E to pass afterwards through the tensionspring C.00945.
 Follow now the instruction as for the cylindrical spoolholder.

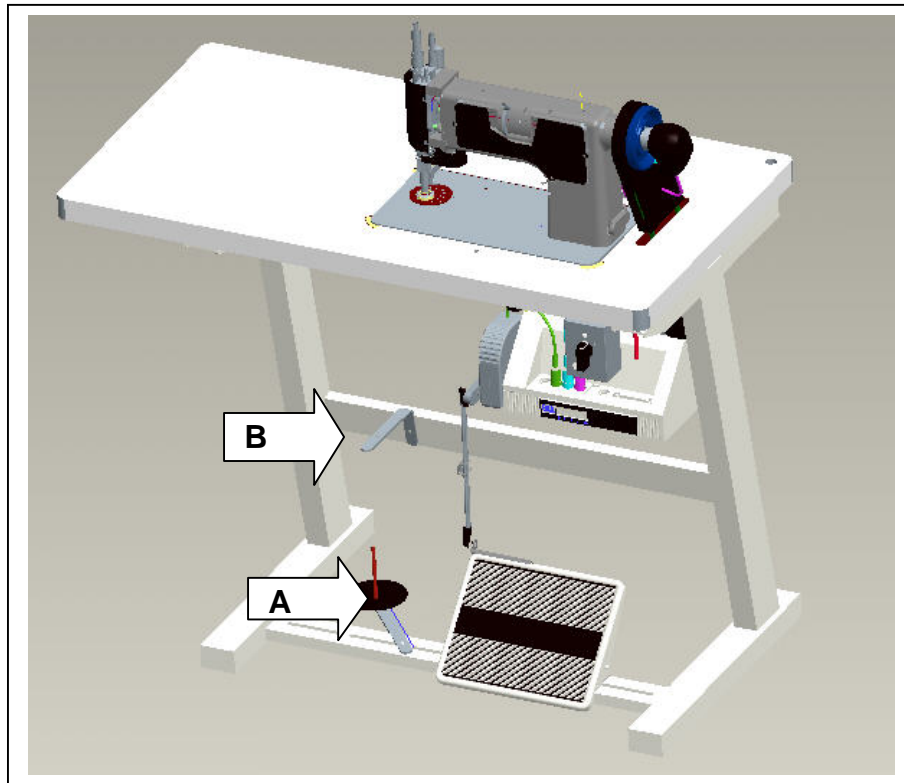


FIG. 8

C The machine threading for braiding.

The machine CORNELLY LG3 makes every kind of braiding (flat, raised, side sewn or center sewn) with any braid, cord, ribbon, strung beads, silk, cotton, tergal, terylene, cellophane, plastics, metal threads etc.

Work with a chain stitch and check that the hook point of the needle is in the same place as the flat edge of needle tube. Then set the braiding attachment C.10288W complete .(Fig. 10)

Place the braid, cord or ribbon, etc. on the spool L (Fig. 9) above the head of the machine. Use small ball chaplet to pass the braid through the needle tube, entering top opening, going out of the needle tube through the bottom opening, then passing through the suitable guide or nipple. (See Chapter 7.)

Nipple must be in the same direction as the hollow part of the needle tube

The nipple is composed of four parts :

- small tube tightened in the needle tube
- screw.
- Small spring for cloth pressure (if taping)
- guide

The braid must slide freely in the nipple but reasonable. When you ask for a new guide, never forget to send us a small sample of the braid or cord.

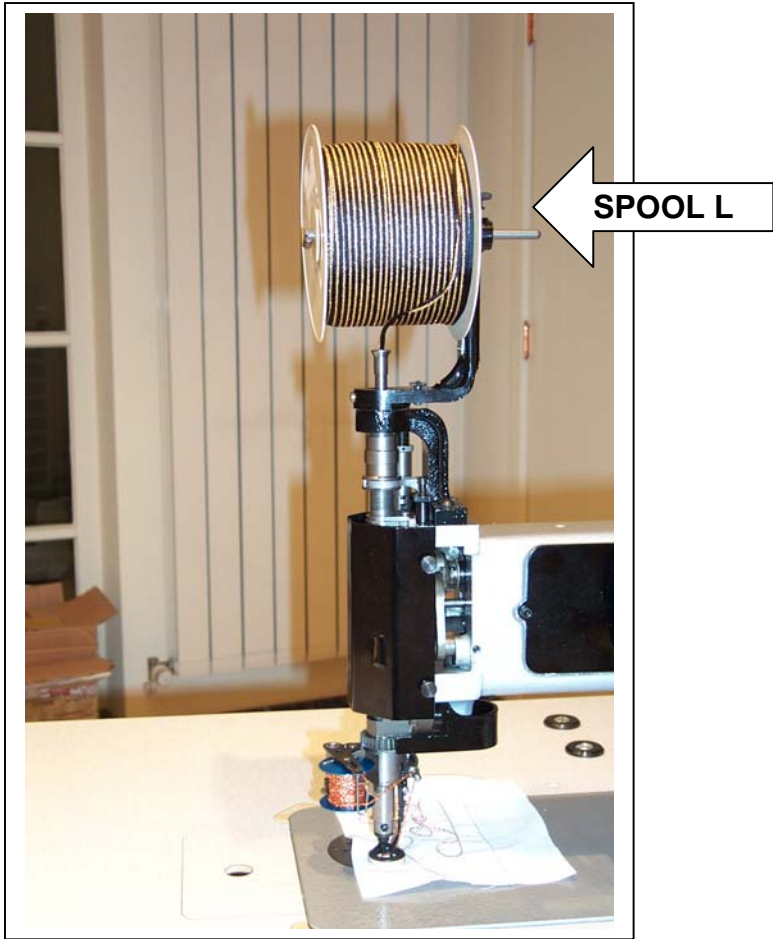


FIG. 9

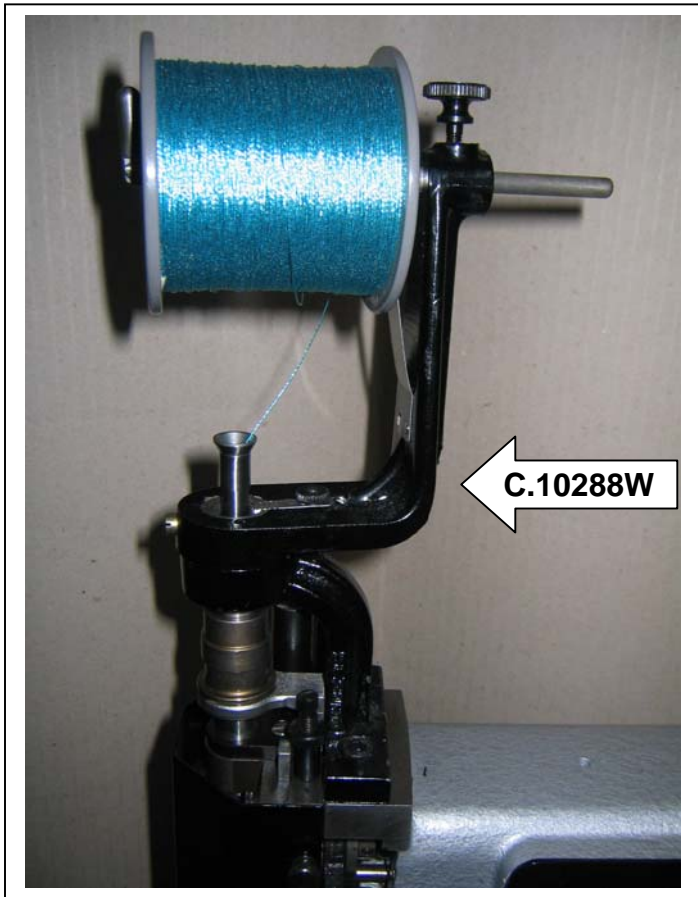


FIG. 10

SEVERAL THREAD WORKS

Accessories are mounted on weaving gear C.10294 and are marked A & C , as well as on the gear. (Fig. 11)

Two threads works are made by braid curling around the chainstitch row which sews it on the cloth.

Three threads works are made with additional stuffing between coiling and chain stitch.

a. Two threads works

Use the following parts :

- Spoolholder C.10632W mounted on the weaving gear C.10294
- Weaver C.10300W
- Nipple C.00601C...for 2 threads screwed in lower tube (according thickness)

(Fig. 11).

The thread comes from spool C.00635M, passes through the hole of the weaver holder C.10302 through the eyelet C.00619 then into the thread guide C.10304/1.7 or C.10304/3, according to the thickness.

Let the lace pass under the pressure foot. The thread tension is adjusted by the screw which is under the spoolholder.

The weaver height settings will be made when the machine is disclutched and the nipple is in upper position. Release the weaver assembly holding screw and set the lining with lower part of nipple.

Since in two threads works, the chain stitch is completely coated by the coiling thread, machine must be set with a rather short stitch.

b. Three threads works

Use the following parts :

- Spoolholder C.10632W complete
- Weaver C.10300W complete
- Nipple C.01127A... for three threads, size according to cord thickness
- Braiding attachment C.10288W complete

(Fig. 10 & 11)

Same works as with two threads, plus a "Stuffing" thread which must come through the hook needle holder. It is better to use a rather flexible material.

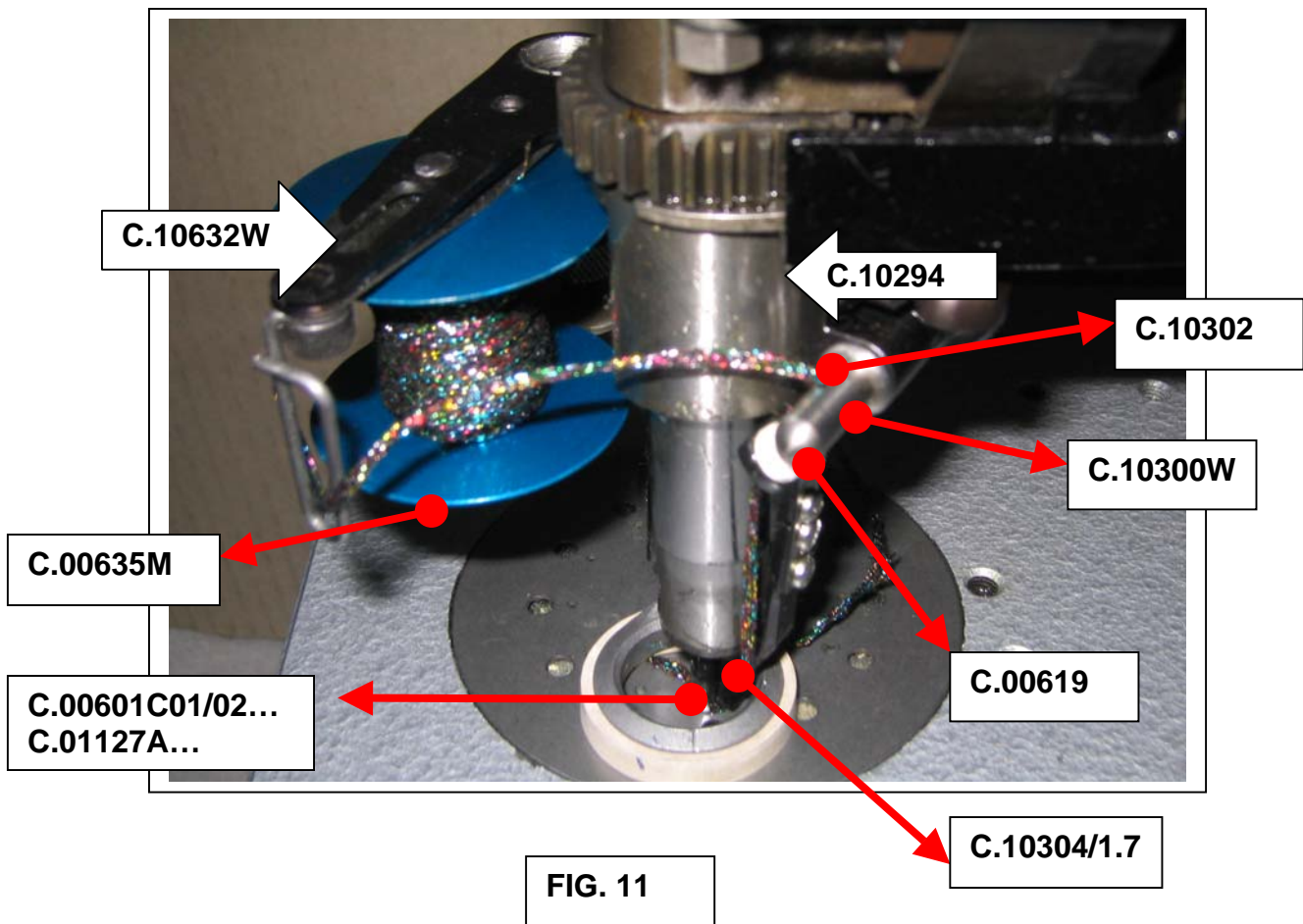
Put the crank towards the operator, the stuffing thread passage hole must be on the opposite side. The hook needle will be screwed so that its hook will be on the opposite side of the flat part of the needle holder. The coiling thread comes from spool C.00635M and passes through holes. Follow the instructions as for 2 threads. The stuffing thread comes from the braiding attachment C.10288W complete and passes through the needle holder and the guide and comes upon material. The hook needle is set rather close to the material to obtain a short chain stitch.

c. Spine or Picot works

The thread is coming from the braid spool, passes through the hook holder and the nipple. Adjust very strong then tension and increase the hook height. The chain stitch thread tension must be practically zero. This spine stitch happens only when working on circles or curves.

WARNING :

For all those kinds of works, make sure that the weaving gear is correctly set. To check this, run the machine at full speed to be sure the declutching is correct. Turn the crank to the left, hole A on the weaving gear must be just in front of the operator.



CHAPTER 4 : ADJUSTING THE STITCH LENGTH.

To adjust the stitch length, you have to unscrew the nut : C.13296 (fig. 5), then turn the screw C.00100 (Fig. 5). Screw downwards to shorten the stitch and screw upwards to lengthen the stitch. If you want to have very big stitches or the fabric has to pass fluently the feeddog without braking the thread you have to unscrew C.00106 and raise part : C.10015 (Fig. 12)

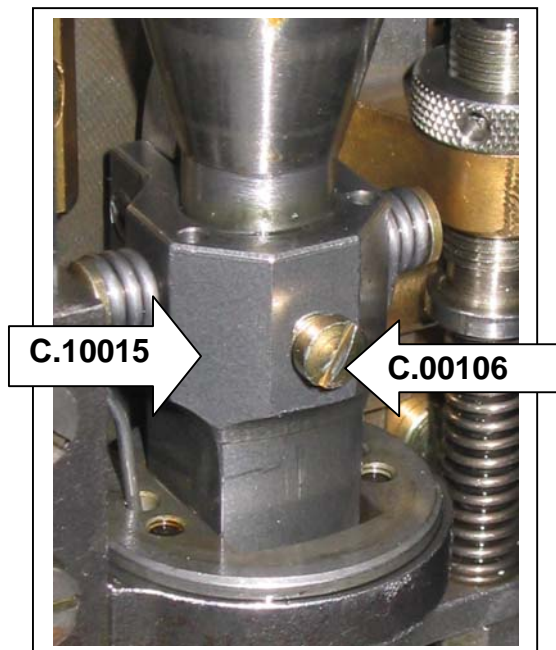


FIG. 12

CHAPTER 5 : ADJUSTING THE THREAD TENSION

The thread tension can be regulated by

1. adjusting the needle height
2. adjusting the thread tension

a. Adjusting the needle height

If you want a very thin stitch you have to lower the needle.

If you want a very large stitch you have to upper the needle but not TOO high because this can cause lack of stitches.

b. Adjusting the thread tension

There is also here a difference in adjusting the thread tension depending from the Cylindrical or Conical spoolholder.

The tension cannot be too high or too less.

For the cylindrical spoolholder you can regulate the tension by the lever C.00094 (Fig. 6)

For the conical spoolholder you can regulate the tension by screw 25764 (Fig 13).

If you are missing some stitches : increase the tension

If the thread is breaking : decrease the tension.

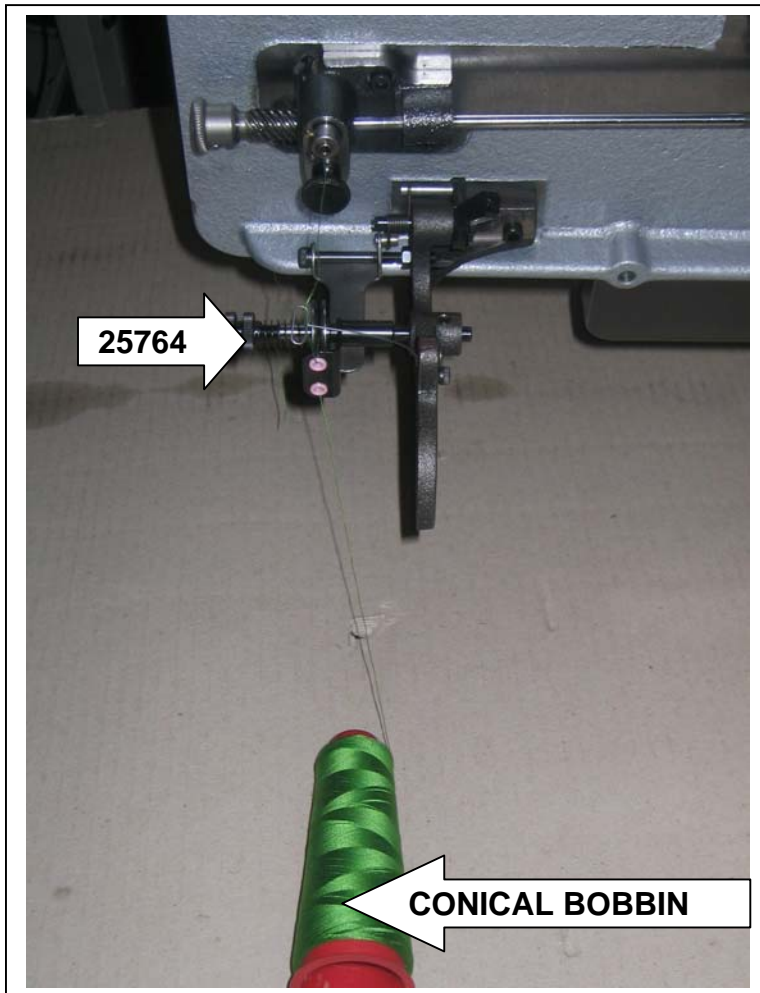


FIG. 13

The Cornely machine is probably the most durable piece of machinery ever made. This could be due to the care they are given by the operator.

CHAPTER 6 : LUBRICATION

When you oil the machine, do it sparingly.
If you get too much oil, the machine will spit the oil back onto the fabric.

Every moving part needs oil on it.

OIL TYPE

- ARAL VITAN G F 22
- BP ENERGOL HLP 22
- FINA HYDRAN 22
- MOBIL D.T.E. 22
- SHELL TELLUS C.22

REMARKS

The machine Cornely LG3 has a special equipment situated in front of the head with which you can change the speed when curling around the chainstitch row. You can choose to curl around every 2/3/4/5 or 6 stitches according the work. This is a very easy operation. For the simple chainstitch work you have to put the speed on O. (Fig 14).

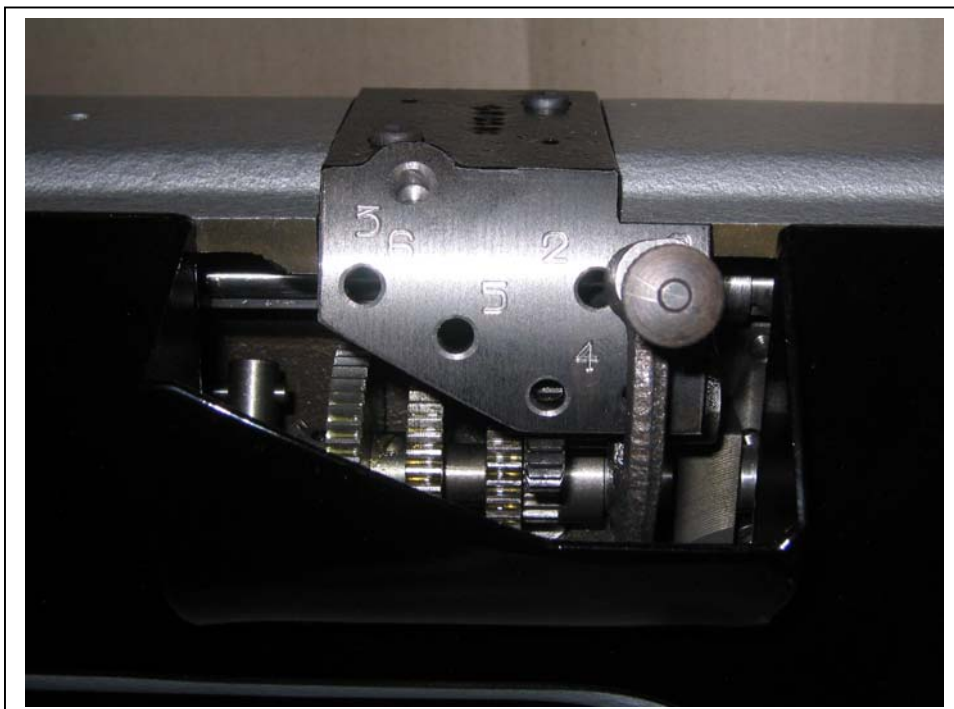
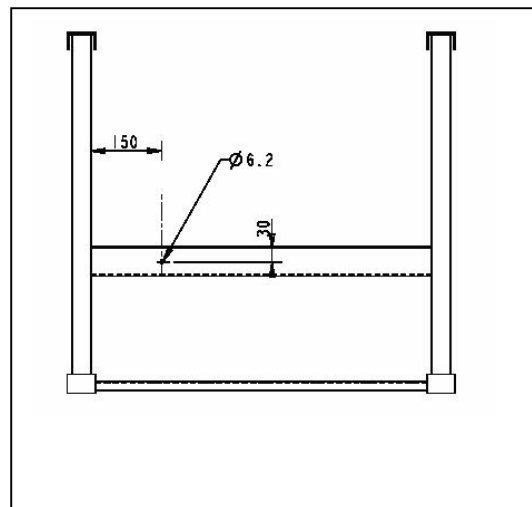
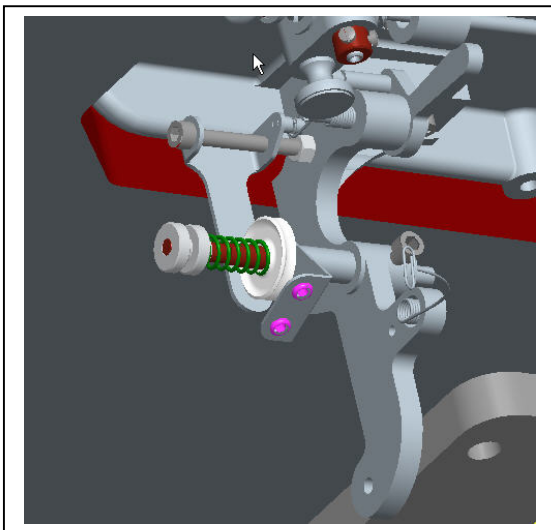
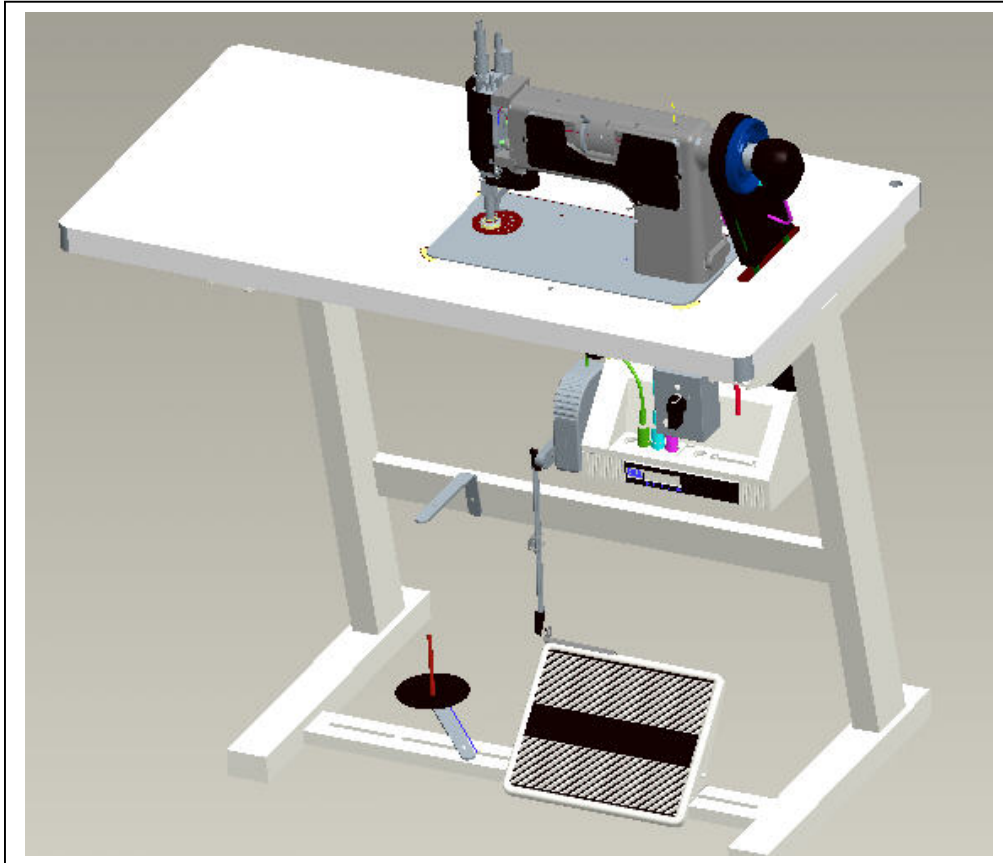
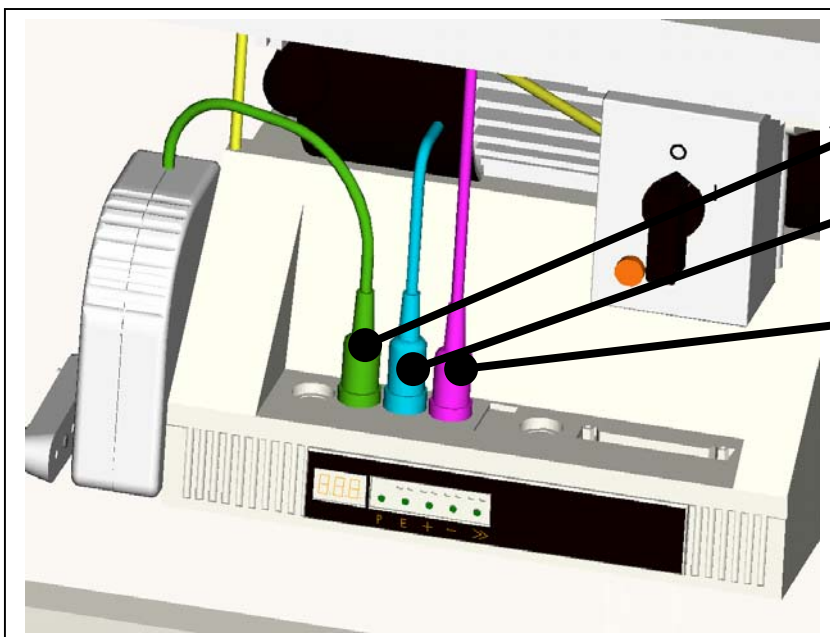
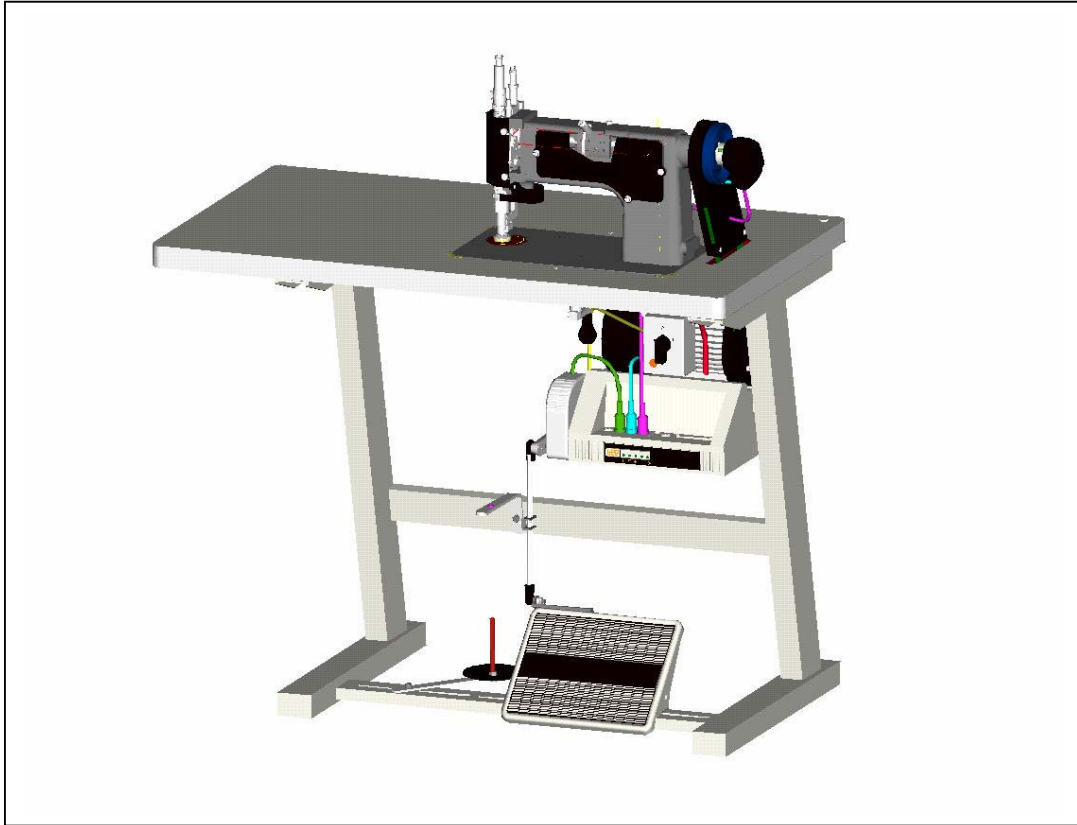


FIG 14

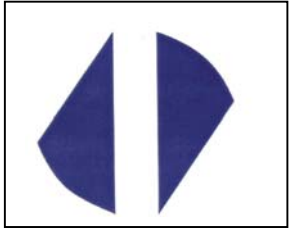
CHAPTER 7 : INSTALLATION OF THE BOBIN STAND



CHAPTER 8 : INSTALLATION OF THE EURAMOT MOTOR



- *ACTUATOR
- *COMMUTATION
TRANSMITTER FOR
DC MOTOR
- *POSITION
TRANSMITTER



TITAN BARATTO
CORNELY

CORNELY LG3
English
Spare Parts Manual



NV. A. DE KONINCK

Avenue Sleenckx 84-86

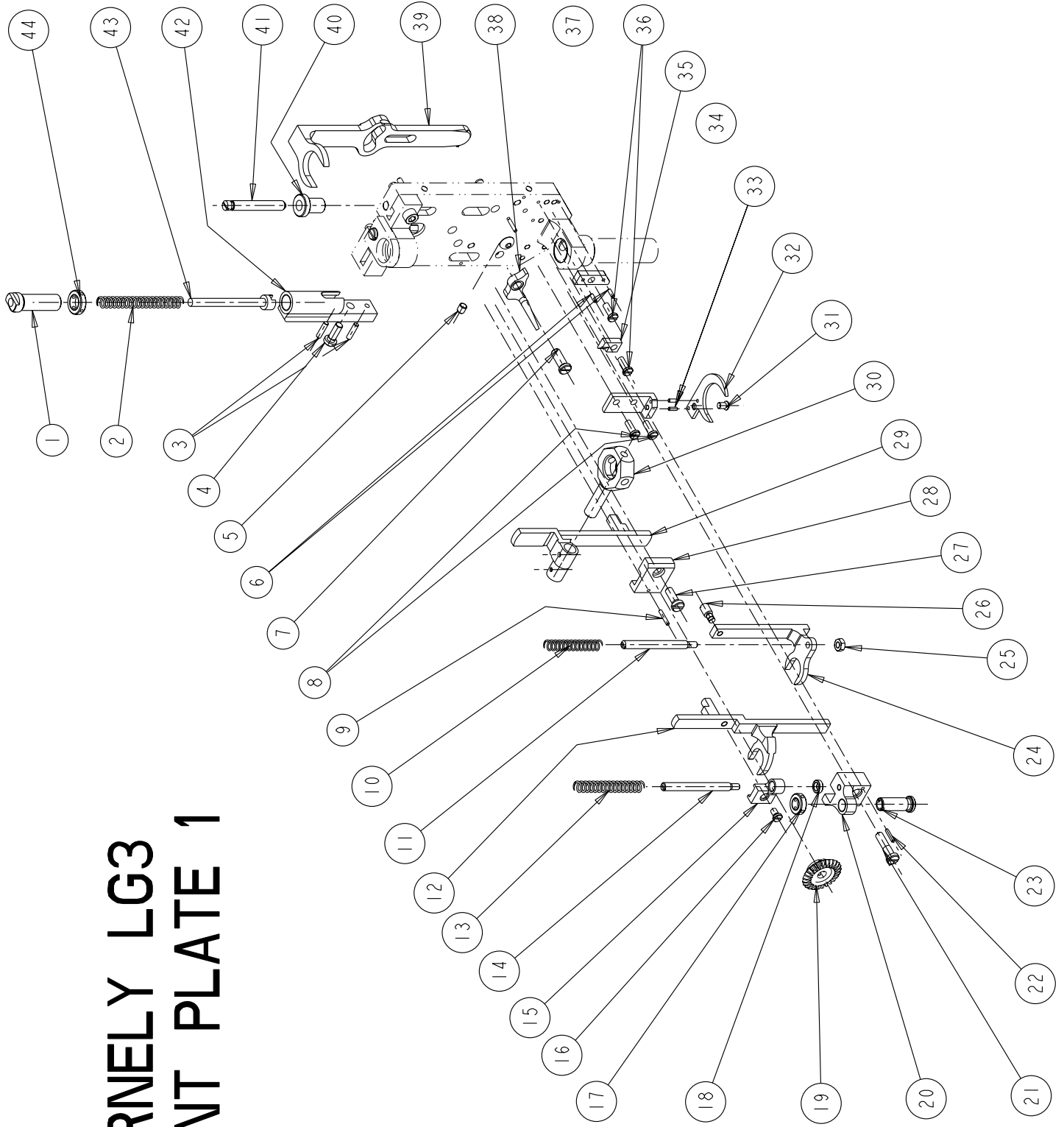
B-1030 BRUSSELS -BELGIUM

Phone : ++32/2 216 31 40 Fax : ++32/2 242 41 89

E-mail : info@titansew.com Web : www.titansew.com

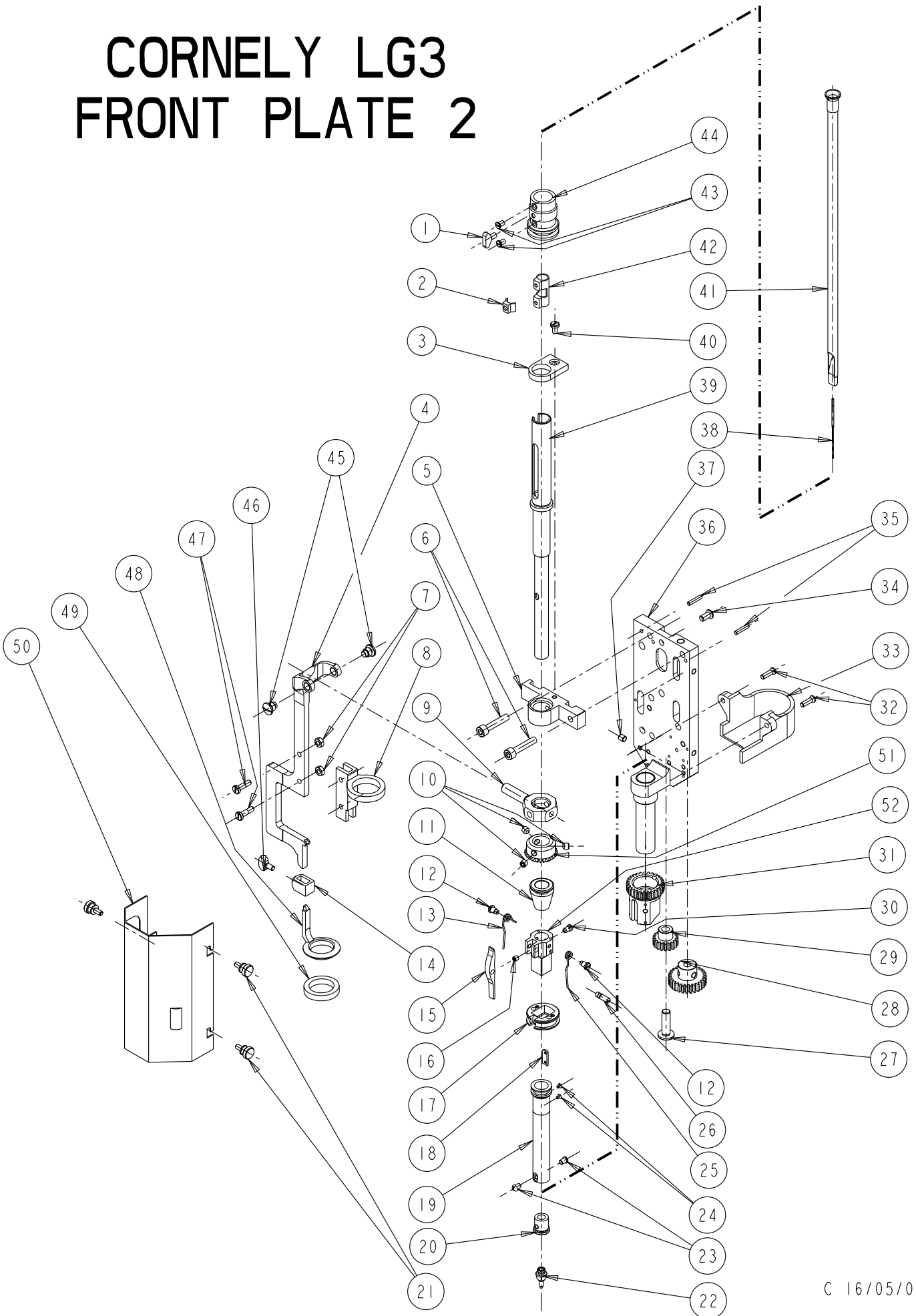
<u>Ref. N°</u>	<u>Code Nr</u>	<u>Description</u>
1	C.13174V	SCREW
2	C.13175V	SCREW
3	C.13176	STOP PLATE
4	C.10334C	SNAP RING
5	C.10333	LEVER
6	C.03804	RING
7	C.10338	GEAR
8	C.10334	GEAR
9	C.00109B	SCREW
10	C.13173V	SCREW
11	C.13177VP	SCREW
12	C.13181V	SCREW
13	C.13181	SHAFT
14	C.13178	ROLLER
15	C.13182	SQUARE CONE SLIDER
16	C.00052	ROLLER
17	C.13183	SQUARE MITRE-JOINT SLIDER
18	C.00128B	SCREW
19	C.13184	SQUARE GABE-HOOK SLIDER
20	C.13180	SHAFT
21	C.13180V	SCREW
22	C.13177	CAM ASSEMBLY
23	C.13177V	SCREW
24	C.13173	BUSHING
25	C.00082	THRUST COLLAR
26	C.10335	KEY
27	C.00534	SCREW
28	C.02677	SHAFT
29	C.00841	SCREW
30	C.13176V	SCREW
31	C.10165	DRIVING ROD
32	C.13175	ECCENTRIC
33	C.13174	BUSHING
34	C.13206V	SCREW
35	C.13206	PULLEY
36	C.13909	PULLEY HOLDER
37	C.13909VP	SCREW
38	C.13909V	SCREW
39	C.13172	MAIN SHAFT

CORNELY LG3 FRONT PLATE 1



<u>Ref. N°</u>	<u>Code Nr</u>	<u>Description</u>
1	C.10151	REGULATING BUSHING
2	C.10154	SPRING
3	C.10150G	PIN
4	C.00105	SCREW
5	C.02523	SCREW
6	C.01868G	PIN
7	C.10107	STUD
8	C.00101	SCREW
9	C.10156G	PIN
10	C.10160	SPRING
11	C.10163	ROD FOR SPRING GUIDE
12	C.10023	SLIDER
13	C.10172	SPRING
14	C.10157	ROD FOR SPRING GUIDE
15	C.10156	SLIDER BRIDGE
16	C.00112	SCREW
17	C.10162	NUT
18	C.10158	WASHER
19	C.00141	GEAR
20	C.10053	SLIDER BRIDGE
21	C.00104	SCREW
22	C.10053G	PIN
23	C.10161	TENSION NUT
24	C.10021	MITRE JOINT SLIDER
25	C.00048D	NUT
26	C.00108	SCREW
27	C.00105	SCREW
28	C.10276	SLIDER BRIDGE
29	C.10275	GAB HOOK SLIDER
30	C.10278	HINGE
31	C.00634	SCREW
32	C.01123C	FORK
33	C.00647G	PIN
34	C.00647	FORK BASE
35	C.01871	SLIDE BLOCK
36	C.00101	SCREW
37	C.01868	SLIDE BLOCK
38	C.00051	LEVER
39	C.10050	HEART
40	C.13296	NUT
41	C.00100	POINT REGULATING SCREW
42	C.10150	BASE FOR SPRING
43	C.10153	SPRING GUIDE
44	C.10252	NUT

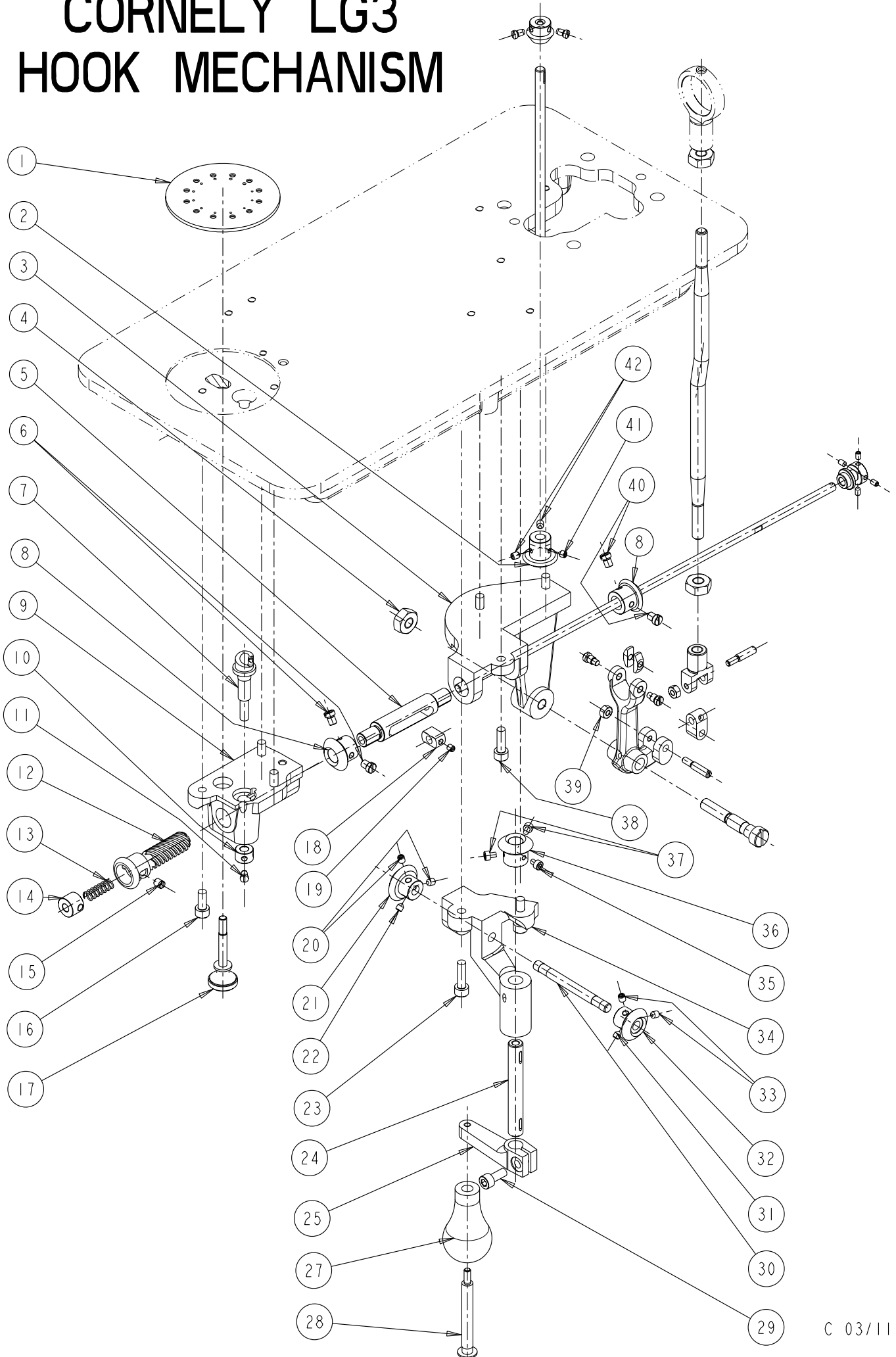
CORNELY LG3 FRONT PLATE 2



C 16/05/05

<u>Ref. N°</u>	<u>Code Nr</u>	<u>Description</u>
1	C.10298	SCREW
2	C.10284	SHAFT PROTECTION
3	C.10029	STOP PLATE
4	C.10277	GABE-HOOK LEVER
5	C.10272	FRONT PLATE HEAD
6	C.10272V	SCREW
7	C.06245	NUT
8	C.10296	RING GABE-HOOK
9	C.10278	SHAFT FOR HINGE
10	C.10140V	SCREW
11	C.01122	CONE
12	C.00110	SCREW
13	C.00595A	SPRING
14	C.10025	COLLAR
15	C.10033	CONE LEVER
16	C.00657	SCREW
17	C.01054W	GUIDE RING ASSEMBLY
18	C.10174	KEY
19	C.10274	TUBE
20	C.01125	NIPPLE HOLDER
21	C.00001D	SCREW
22	C.00601...+SIZE	NIPPLE
23	C.01109B	SCREW
24	C.10174V	SCREW
25	C.00595B	SPRING
26	C.10032	CONE SHAFT
27	C.00611B	SHAFT
28	C.10292	GEAR
29	C.10293	GEAR
30	C.00106	SCREW
31	C.10294	GEAR
32	C.00232	SCREW
33	C.00636	COVER
34	C.00103	SCREW
35	C.10271G	PIN
36	C.10271	FRONT PLATE
37	C.01862	SCREW
38	C.0253SC...+ SIZE	HOOK/NEEDLE
39	C.10273	TUBE
40	C.00869	SCREW
41	C.01120	HOOK HOLDER
42	C.10283	HOOK HOLDER CLAMP
43	C.00634	SCREW
44	C.10280	TUBE HEAD
45	C.00597	SCREW
46	C.10025V	SCREW
47	C.10016	SCREW
48	C.00946A	FEED DOG
49	C.CA-26	RUBBER RING
50	C.10307	NEEDLE BAR PROTECTION

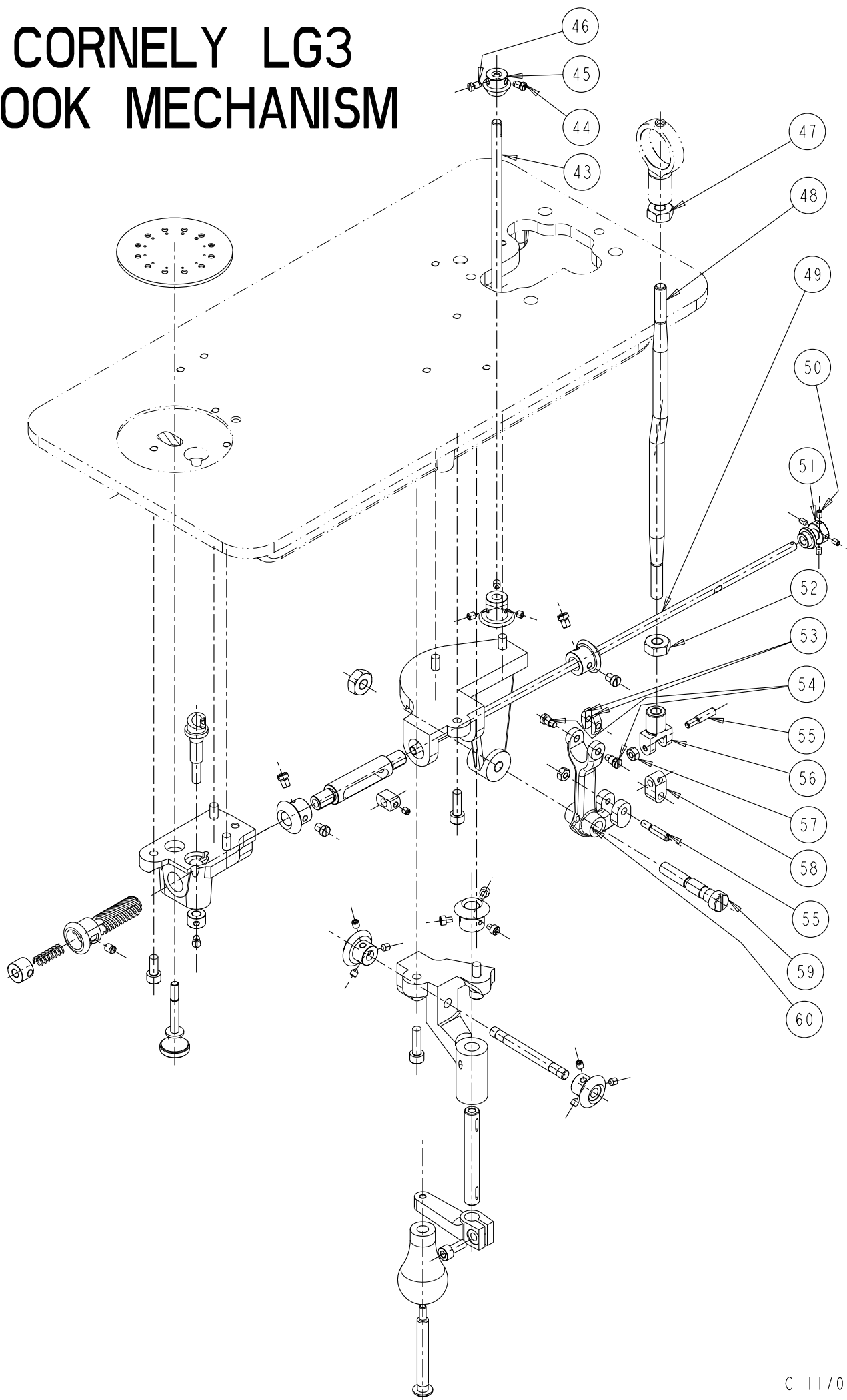
4 CORNELY LG3 HOOK MECHANISM



<u>Ref. N°</u>	<u>Code Nr</u>	<u>Description</u>
1	C.01707	DISC
2	C.00144	GEAR
3	C.00210	BASE
4	C.00117BIS	NUT
5	C.00224	BUSHING
6	C.00637V	SCREW
7	C.10064	HOOK
8	C.00637	GEAR
9	C.10007	BASE
10	C.05471	THRUST COLLAR
11	C.00106	SCREW
12	C.10063	GEAR
13	C.00063E	SPRING
14	C.00063C	THRUST COLLAR
15	C.00063D	SCREW
16	C.10007V	SCREW
17	C.00056	DISC SCREW
18	C.00212	SLIDE BLOC
19	C.00111B	SCREW
20	C.00142V	SCREW
21	C.00142	GEAR
22	C.00142VP	SCREW
23	C.00790V	SCREW
24	C.00800	SHAFT
25	C.13188	CRANK
27	C.00797	HANDLE
28	C.13185	SHAFT
29	C.13188V	SCREW
30	C.00801	SHAFT
31	C.00142VP	SCREW
32	C.00142	GEAR
33	C.00142V	SCREW
34	C.00790	BASE FOR CRANK
35	C.00143VP	SCREW
36	C.00143	GEAR
37	C.00143V	SCREW
38	C.00210V	SCREW
39	C.00048C	NUT
40	C.00637V	SCREW
41	C.00144VP	SCREW
42	C.00144V	SCREW

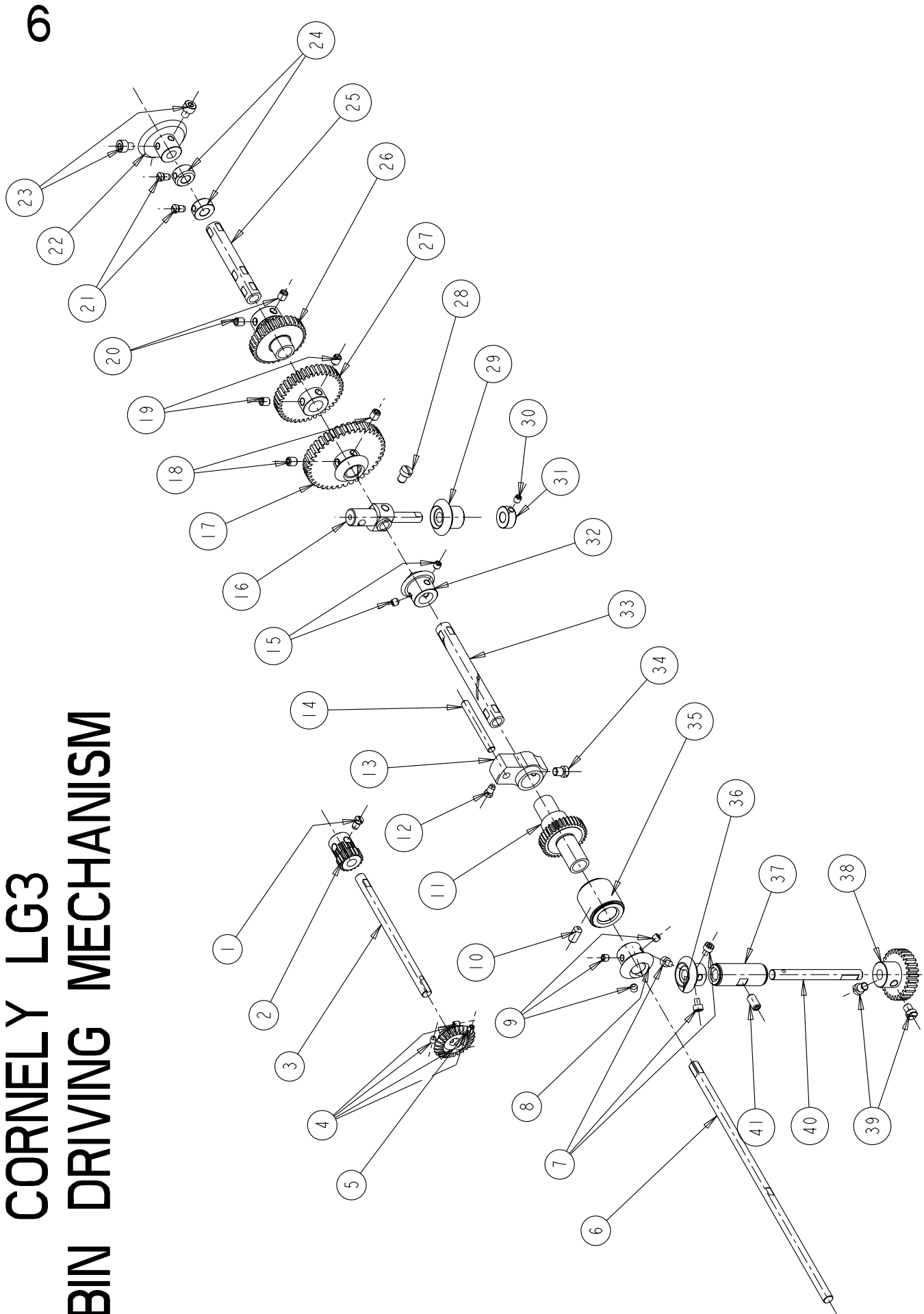
5

CORNELY LG3 HOOK MECHANISM



<u>Ref. N°</u>	<u>Code Nr</u>	<u>Description</u>
43	C.10254	SHAFT
44	C.01582VP	SCREW
45	C.01582	GEAR
46	C.01582V	SCREW
47	C.05538	NUT
48	C.10255	ROD
49	C.00060C	SHAFT
50	C.00068CV	SCREW
51	C.00068C	COUPLING
52	C.05539	NUT
53	C.00976	SLIDE BLOC
54	C.00977	SCREW
55	C.05541	SHAFT
56	C.05537	ROD FOOT
57	C.00048C	NUT
58	C.05540	CONNECTION LEVER
59	C.00117	HINGE SCREW
60	C.10069	LEVER

CORNELY LG3 BOBIN DRIVING MECHANISM



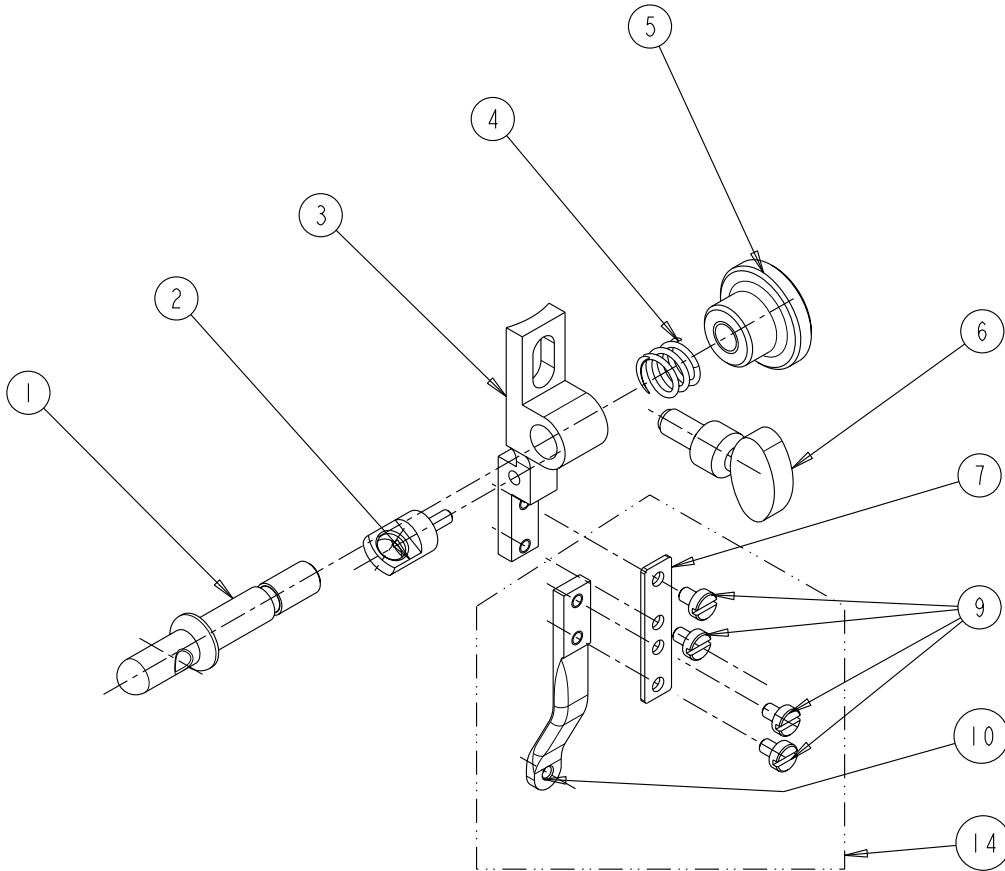
67

C 03/11/05

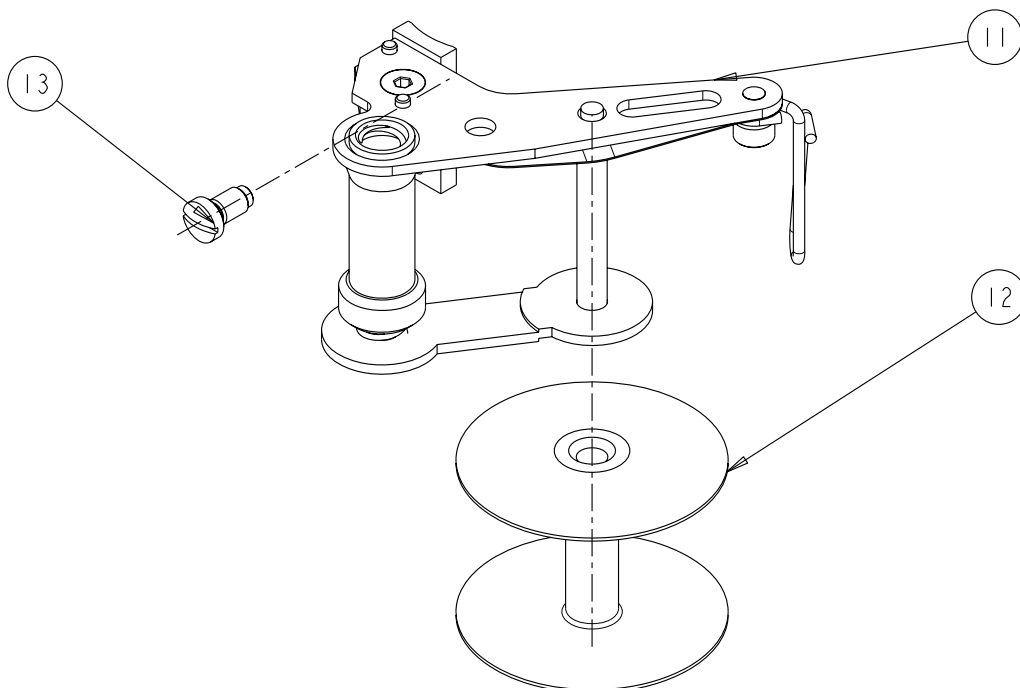
<u>Ref. N°</u>	<u>Code Nr</u>	<u>Description</u>
1	C.00106	SCREW
2	C.10282	GEAR
3	C.10281	SHAFT
4	C.00141V	SCREW
5	C.00141	GEAR
6	C.10269	SHAFT
7	C.01562V	SCREW
8	C.00637	GEAR
9	C.00637V	SCREW
10	C.10264V	SCREW
11	C.10262	GEAR
12	C.00106	SCREW
13	C.01730	CRANK
14	C.01731	PIN
15	C.00637V	SCREW
16	C.01732B	SHAFT
17	C.10342	GEAR ASSEMBLY
18	C.10342V	SCREW
19	C.10343V	SCREW
20	C.10345V	SCREW
21	C.00106	SCREW
22	C.01580	GEAR
23	C.00106	SCREW
24	C.00950	THRUST COLLAR
25	C.10339	SHAFT
26	C.10345	GEAR ASSEMBLY
27	C.10343	GEAR
28	C.00841	SCREW
29	C.01570	GEAR
30	C.00111	SCREW
31	C.01571	THRUST COLLAR
32	C.00637	GEAR
33	C.10263	SHAFT
34	C.01573	SCREW
35	SET C.13179	BUSHING
36	C.01562B	GEAR
37	SET C.10266	BUSHING
38	C.10292	GEAR
39	C.01573	SCREW
40	C.10265	SHAFT
41	C.10266V	SCREW

7

CORNELY LG3 GUIDE ASSEMBLY C10300W



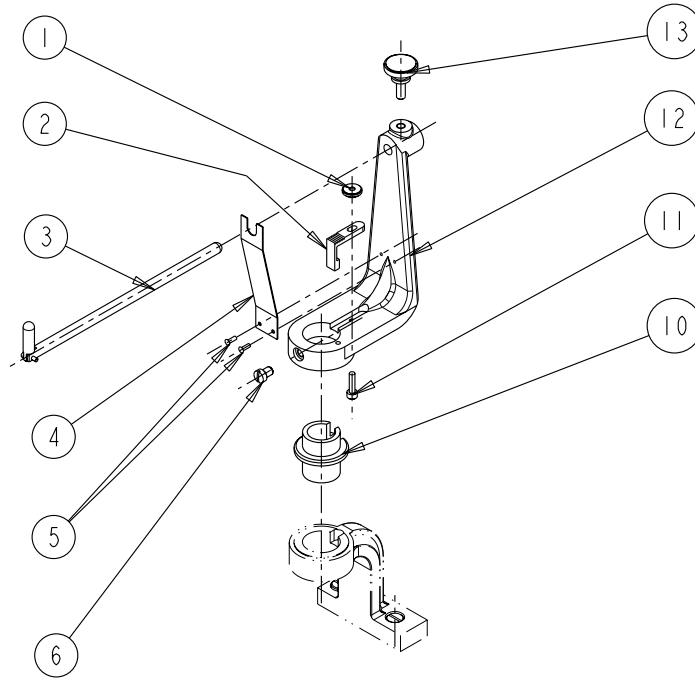
BOBIN HOLDER C.10632W



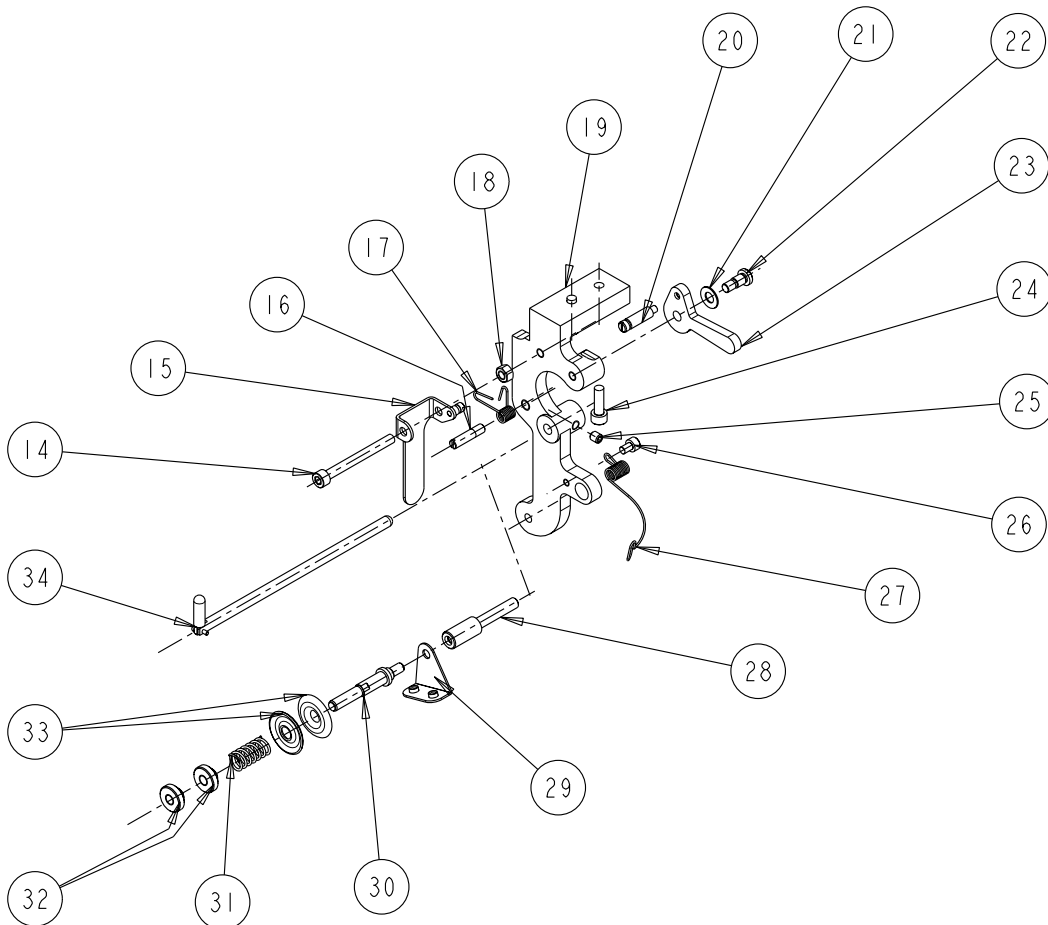
C03/11/05

<u>Ref. N°</u>	<u>Code Nr</u>	<u>Description</u>
1	C.10302	SHAFT
2	C.00619	THREAD GUIDE
3	C.10301	BASE
4	C.10656	SPRING
5	C.10305	BUTTON
6	C.00618	SCREW
7	C.01099	SPRING
9	C.01099V	SCREW
10	C.10304/1.7	THREAD GUIDE HOLE 1.7 MM
10	C.10304/3	THREAD GUIDE HOLE 3 MM
11	C.10632W	BOBIN HOLDER ASSEMBLY
12	C.00635M	BOBIN
13	C.00659	SCREW
14	C.10303/1.7	GUIDE ASSEMBLY
14	C.10303/3	GUIDE ASSEMBLY

CORNELY LG3 BOBIN HOLDER C.10288W

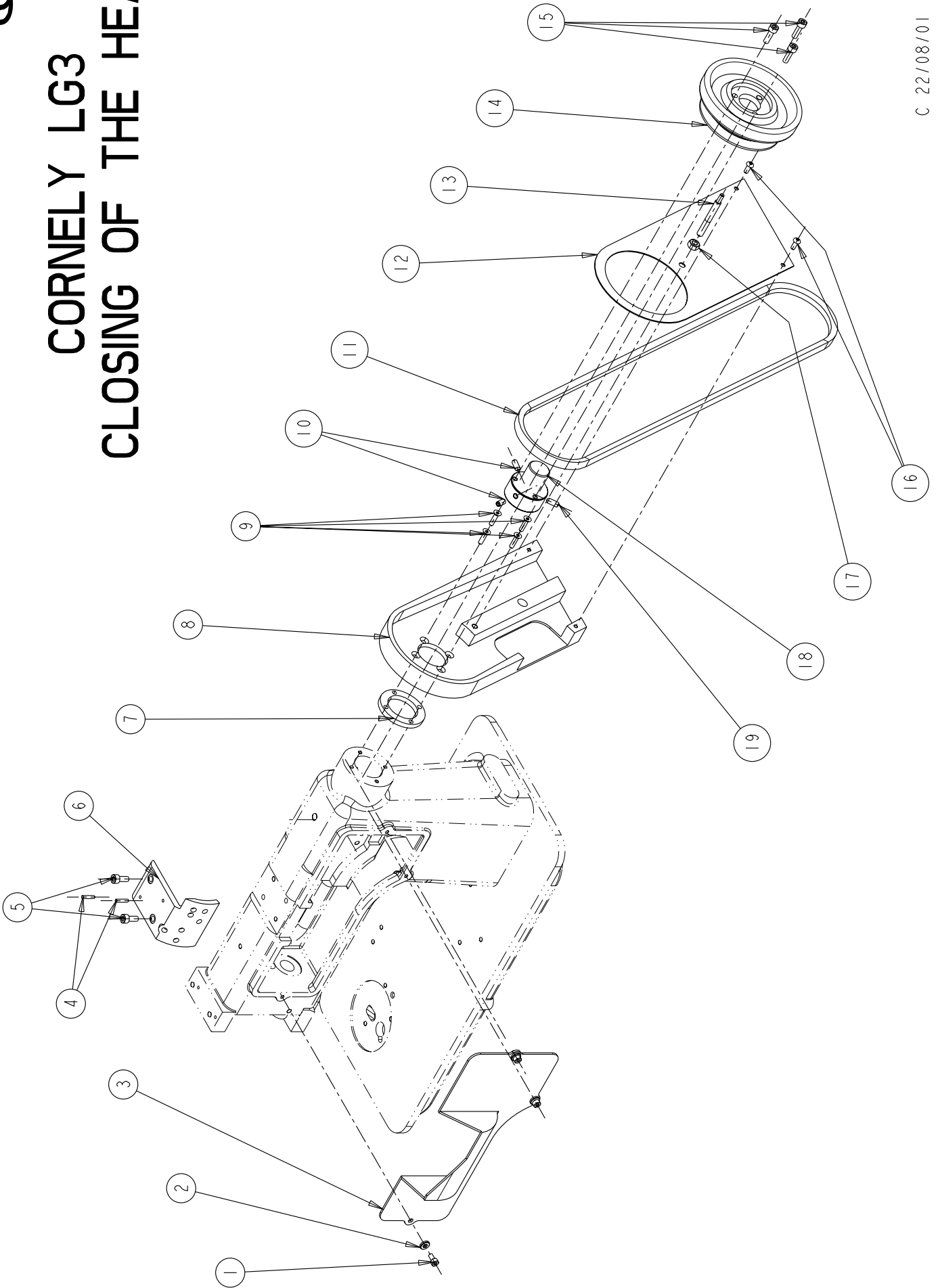


BOBIN HOLDER SET C.10011



Ref. N°	Code Nr	Description
1	C.03344	NUT
2	C.10287	KEY
3	C.01021CW	BOBIN SHAFT
4	C.02719C	SPRING
5	C.02719R	PIN
6	C.00841	SCREW
10	C.10286	BUSHING
11	C.10287V	SCREW
12	C.10288	BOBIN HOLDER
13	C.00097	SCREW
14	C.00093V	SCREW
15	C.00093	BOBIN STOP PLATE
16	C.13372	SPRING SHAFT
17	C.00042	SPRING
18	C.00093E	NUT
19	C.10011	BASE
20	C.00123	SHAFT
21	C.00088	SPRING RING
22	C.13371	SCREW
23	C.00094	HANDLE
24	C.10011V	SCREW
25	C.13295V	SCREW
26	C.00043V	SCREW
27	C.000945-07/10	TENSION SPRING
28	C.13295	SHAFT
29	C.13186	THREAD GUIDE
30	25760	TENSION POST
31	25763K	TENSION SPRING
32	25764	TENSION NUT
33	25761	TENSION DISC
34	C.01021CW	BOBIN SHAFT

CORNELY LG3 CLOSING OF THE HEAD



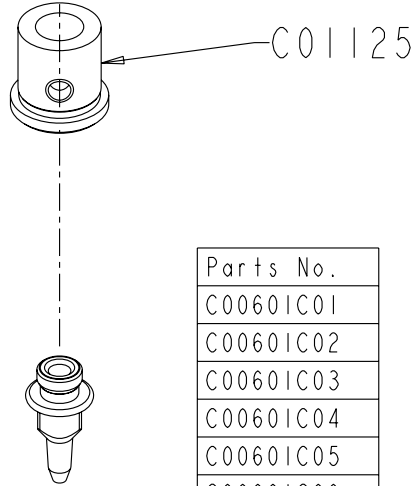
Ref. N°	Code Nr	Description
1	C.10351V	SCREW
2	C.10351R	WASHER
3	C.10351	COVER
4	C.13910	MOTOR BASE
5	C.13910R	WASHER
6	C.10349	DIFFERENTIAL FEED GRADUATION
7	C.13308	RING
8	C.13306	BELT GUARD
9	C.13306V	SCREW
10	C.13300V	SCREW
11	M10013Z	BELT
12	C.13307	COVER
13	C.13298	PIN
14	C.13206	PULLEY
15	C.13206V	SCREW
16	C.13307V	SCREW
17	C.13298E	NUT
18	C.13909	PULLEY HOLDER
19	C.13300VC	SCREW

CORNELY LG3

CHAIN STITCH , MOSS STITCH , COILING

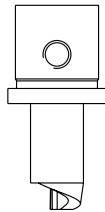


Parts No.	Hook No.
C0253SC070	1
C0253SC080	2
C0253SC090	3
C0253SC100	4
C0253SC110	5
C0253SC120	6



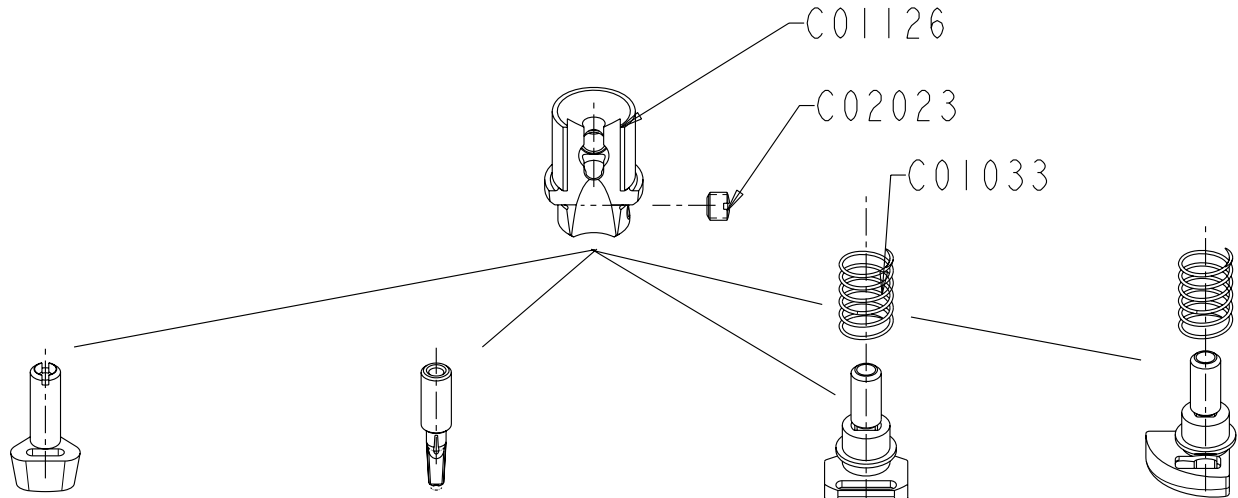
Parts No.
C00601C01
C00601C02
C00601C03
C00601C04
C00601C05
C00601C06
C00601C07
C00601C08
C00601C09
C00601C10

COILING (BRAIDING)



Parts No.	THREAD
C01127A/070	0.7
C01127A/125	1.25
C01127A/150	1.5
C01127A/175	1.75
C01127A/200	2
C01127A/250	2.5
C01127A/275	2.75
C01127A/300	3
C01127A/350	3.5
C01127A/400	4
C01127A/500	5
C01127A/600	6
C01127A/700	7

CORNELY LG3



TAPING

COILING (RAY STITCH)

TAPING

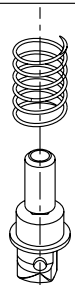
TAPING

Parts No.	TAPE	Hook
C00944C100C3	1	90
C00944C100C4	1	100
C00944C125C3	1.25	90
C00944C125C4	1.25	100
C00944C150C3	1.5	90
C00944C150C4	1.5	100
C00944C175C3	1.75	90
C00944C175C4	1.75	100
C00944C200C3	2	90
C00944C200C4	2	100
C00944C225C3	2.25	90
C00944C225C4	2.25	100
C00944C250C3	2.5	90
C00944C250C4	2.5	100
C00944C275C3	2.75	90
C00944C275C4	2.75	100
C00944C300C3	3	90
C00944C300C4	3	100
C00944C325C3	3.25	90
C00944C325C4	3.25	100
C00944C350C3	3.5	90
C00944C350C4	3.5	100
C00944C375C3	3.75	90
C00944C375C4	3.75	100
C00944C400C3	4	90
C00944C400C4	4	100
C00944C425C3	4.25	90
C00944C425C4	4.25	100
C00944C450C3	4.5	90
C00944C450C4	4.5	100
C00944C475C3	4.75	90
C00944C500C3	5	90
C00944C525C4	5.25	100
C00944C600C4	6	100

Parts No.	THREAD	Hook
C00944A070C2	0.7	80
C00944A070C3	0.7	90
C00944A100C2	1	80
C00944A100C3	1	90
C00944A100C4	1	100
C00944A125C2	1.25	80
C00944A125C3	1.25	90
C00944A150C2	1.5	80
C00944A150C3	1.5	90
C00944A175C3	1.75	90
C00944A200C2	2	80
C00944A200C3	2	90
C00944A200C4	2	100
C00944A225C3	2.25	90
C00944A225C4	2.25	100
C00944A250C3	2.5	90
C00944A250C4	2.5	100
C00944A275C3	2.75	90
C00944A275C4	2.75	100
C00944A300C3	3	90
C00944A325C3	3.25	90
C00944A325C4	3.25	100
C00944A350C2	3.5	80
C00944A350C3	3.5	90
C00944A350C4	3.5	100
C00944A375C3	3.75	90
C00944A400C3	4	90
C00944A400C4	4	100
C00944A450C3	4.5	90

Parts No.	TAPE
C01037AW175	1.75
C01037AW200	2
C01037AW250	2.5
C01037AW300	3
C01037AW350	3.5
C01037AW400	4
C01037AW450	4.5
C01037AW475	4.75
C01037AW500	5
C01037AW550	5.5
C01037AW600	6
C01037AW650	6.5
C01037AW700	7
C01037AW750	7.5
C01037AW800	8
C01037AW900	9
C01037AW1000	10
C01037AW1100	11
C01037AW1200	12

Parts No.	TAPE
C01037BW250C3	2.5
C01037BW300C3	3
C01037BW350C3	3.5
C01037BW400C3	4
C01037BW450C3	4.5
C01037BW500C3	5
C01037BW550C3	5.5
C01037BW600C3	6



COILING

Parts No.	TAPE
C01037CW125	1.25
C01037CW150	1.5
C01037CW175	1.75
C01037CW200	2
C01037CW225	2.25
C01037CW250	2.5
C01037CW275	2.75
C01037CW300	3
C01037CW325	3.25
C01037CW350	3.5
C01037CW375	3.75
C01037CW400	4
C01037CW450	4.5
C01037CW500	5

INDEX

Parts No.	Description.	Page No.	Ref.No
25760	TENSION POST	8	30
25761	TENSION DISC	8	33
25763K	TENSION SPRING	8	31
25764	TENSION NUT	8	32
C.00001D	SCREW	3	21
C.00042	SPRING	8	17
C.00043V	SCREW	8	26
C.00048C	NUT	4	39
C.00048C	NUT	5	57
C.00048D	NUT	2	25
C.00051	LEVER	2	38
C.00052	ROLLER	1	16
C.00056	DISC SCREW	4	17
C.00060C	SHAFT	5	49
C.00063C	THRUST COLLAR	4	14
C.00063D	SCREW	4	15
C.00063E	SPRING	4	13
C.00068C	COUPLING	5	51
C.00068CV	SCREW	5	50
C.00082	THRUST COLLAR	1	25
C.00088	SPRING RING	8	21
C.00093	BOBIN STOP PLATE	8	15
C.00093E	NUT	8	18
C.00093V	SCREW	8	14
C.00094	HANDLE	8	23
C.000945-07/10	TENSION SPRING	8	27
C.00097	SCREW	8	13
C.00100	POINT REGULATING SCREW	2	41
C.00101	SCREW	2	8
C.00101	SCREW	2	36
C.00103	SCREW	3	34
C.00104	SCREW	2	21
C.00105	SCREW	2	4
C.00105	SCREW	2	27
C.00106	SCREW	3	30
C.00106	SCREW	4	11
C.00106	SCREW	6	1
C.00106	SCREW	6	12
C.00106	SCREW	6	21
C.00106	SCREW	6	23
C.00108	SCREW	2	26
C.00109B	SCREW	1	9
C.00110	SCREW	3	12
C.00111	SCREW	6	30
C.00111B	SCREW	4	19
C.00112	SCREW	2	16
C.00117	HINGE SCREW	5	59
C.00117BIS	NUT	4	4
C.00123	SHAFT	8	20
C.00128B	SCREW	1	18
C.00141	GEAR	2	19

INDEX

Parts No.	Description.	Page No.	Ref.No
C.00141	GEAR	6	5
C.00141V	SCREW	6	4
C.00142	GEAR	4	32
C.00142	GEAR	4	21
C.00142V	SCREW	4	20
C.00142V	SCREW	4	33
C.00142VP	SCREW	4	22
C.00142VP	SCREW	4	31
C.00143	GEAR	4	36
C.00143V	SCREW	4	37
C.00143VP	SCREW	4	35
C.00144	GEAR	4	2
C.00144V	SCREW	4	42
C.00144VP	SCREW	4	41
C.00210	BASE	4	3
C.00210V	SCREW	4	38
C.00212	SLIDE BLOC	4	18
C.00224	BUSHING	4	5
C.00232	SCREW	3	32
C.00534	SCREW	1	27
C.00595A	SPRING	3	13
C.00595B	SPRING	3	25
C.00597	SCREW	3	45
C.00601...+SIZE	NIPPLE	3	22
C.00611B	SHAFT	3	27
C.00618	SCREW	7	6
C.00619	THREAD GUIDE	7	2
C.00634	SCREW	2	31
C.00634	SCREW	3	43
C.00635M	BOBIN	7	12
C.00636	COVER	3	33
C.00637	GEAR	4	8
C.00637	GEAR	6	8
C.00637	GEAR	6	32
C.00637V	SCREW	4	6
C.00637V	SCREW	4	40
C.00637V	SCREW	6	9
C.00637V	SCREW	6	15
C.00647	FORK BASE	2	34
C.00647G	PIN	2	33
C.00657	SCREW	3	16
C.00659	SCREW	7	13
C.00790	BASE FOR CRANK	4	34
C.00790V	SCREW	4	23
C.00797	HANDLE	4	27
C.00800	SHAFT	4	24
C.00801	SHAFT	4	30
C.00841	SCREW	1	29
C.00841	SCREW	6	28
C.00841	SCREW	8	6
C.00869	SCREW	3	40

INDEX

Parts No.	Description.	Page No.	Ref.No
C.00946A	FEED DOG	3	48
C.00950	THRUST COLLAR	6	24
C.00976	SLIDE BLOC	5	53
C.00977	SCREW	5	54
C.01021CW	BOBIN SHAFT	8	3
C.01021CW	BOBIN SHAFT	8	34
C.01054W	GUIDE RING ASSEMBLY	3	17
C.01099	SPRING	7	7
C.01099V	SCREW	7	9
C.01109B	SCREW	3	23
C.01120	HOOK HOLDER	3	41
C.01122	CONE	3	11
C.01123C	FORK	2	32
C.01125	NIPPLE HOLDER	3	20
C.01562B	GEAR	6	36
C.01562V	SCREW	6	7
C.01570	GEAR	6	29
C.01571	THRUST COLLAR	6	31
C.01573	SCREW	6	34
C.01573	SCREW	6	39
C.01580	GEAR	6	22
C.01582	GEAR	5	45
C.01582V	SCREW	5	46
C.01582VP	SCREW	5	44
C.01707	DISC	4	1
C.01730	CRANK	6	13
C.01731	PIN	6	14
C.01732B	SHAFT	6	16
C.01862	SCREW	3	37
C.01868	SLIDE BLOCK	2	37
C.01868G	PIN	2	6
C.01871	SLIDE BLOCK	2	35
C.02523	SCREW	2	5
C.0253SC...+ SIZE	HOOK/NEEDLE	3	38
C.02677	SHAFT	1	28
C.02719C	SPRING	8	4
C.02719R	PIN	8	5
C.03344	NUT	8	1
C.03804	RING	1	6
C.05471	THRUST COLLAR	4	10
C.05537	ROD FOOT	5	56
C.05538	NUT	5	47
C.05539	NUT	5	52
C.05540	CONNECTION LEVER	5	58
C.05541	SHAFT	5	55
C.06245	NUT	3	7
C.10007	BASE	4	9
C.10007V	SCREW	4	16
C.10011	BASE	8	19
C.10011V	SCREW	8	24
C.10016	SCREW	3	47

INDEX

Parts No.	Description.	Page No.	Ref.No
C.10021	MITRE JOINT SLIDER	2	24
C.10023	SLIDER	2	12
C.10025	COLLAR	3	14
C.10025V	SCREW	3	46
C.10029	STOP PLATE	3	3
C.10032	CONE SHAFT	3	26
C.10033	CONE LEVER	3	15
C.10050	HEART	2	39
C.10053	SLIDER BRIDGE	2	20
C.10053G	PIN	2	22
C.10063	GEAR	4	12
C.10064	HOOK	4	7
C.10069	LEVER	5	60
C.10107	STUD	2	7
C.10140V	SCREW	3	10
C.10150	BASE FOR SPRING	2	42
C.10150G	PIN	2	3
C.10151	REGULATING BUSHING	2	1
C.10153	SPRING GUIDE	2	43
C.10154	SPRING	2	2
C.10156	SLIDER BRIDGE	2	15
C.10156G	PIN	2	9
C.10157	ROD FOR SPRING GUIDE	2	14
C.10158	WASHER	2	18
C.10160	SPRING	2	10
C.10161	TENSION NUT	2	23
C.10162	NUT	2	17
C.10163	ROD FOR SPRING GUIDE	2	11
C.10165	DRIVING ROD	1	31
C.10172	SPRING	2	13
C.10174	KEY	3	18
C.10174V	SCREW	3	24
C.10252	NUT	2	44
C.10254	SHAFT	5	43
C.10255	ROD	5	48
C.10262	GEAR	6	11
C.10263	SHAFT	6	33
C.10264V	SCREW	6	10
C.10265	SHAFT	6	40
C.10266V	SCREW	6	41
C.10269	SHAFT	6	6
C.10271	FRONT PLATE	3	36
C.10271G	PIN	3	35
C.10272	FRONT PLATE HEAD	3	5
C.10272V	SCREW	3	6
C.10273	TUBE	3	39
C.10274	TUBE	3	19
C.10275	GAB HOOK SLIDER	2	29
C.10276	SLIDER BRIDGE	2	28
C.10277	GABE-HOOK LEVER	3	4
C.10278	HINGE	2	30

INDEX

Parts No.	Description.	Page No.	Ref.No
C.10278	SHAFT FOR HINGE	3	9
C.10280	TUBE HEAD	3	44
C.10281	SHAFT	6	3
C.10282	GEAR	6	2
C.10283	HOOK HOLDER CLAMP	3	42
C.10284	SHAFT PROTECTION	3	2
C.10286	BUSHING	8	10
C.10287	KEY	8	2
C.10287V	SCREW	8	11
C.10288	BOBIN HOLDER	8	12
C.10292	GEAR	3	28
C.10292	GEAR	6	38
C.10293	GEAR	3	29
C.10294	GEAR	3	31
C.10296	RING GABE-HOOK	3	8
C.10298	SCREW	3	1
C.10301	BASE	7	3
C.10302	SHAFT	7	1
C.10303/1.7	GUIDE ASSEMBLY	7	14
C.10303/3	GUIDE ASSEMBLY	7	14
C.10304/1.7	THREAD GUIDE HOLE 1.7 MM	7	10
C.10304/3	THREAD GUIDE HOLE 3 MM	7	10
C.10305	BUTTON	7	5
C.10307	NEEDLE BAR PROTECTION	3	50
C.10333	LEVER	1	5
C.10334	GEAR	1	8
C.10334C	SNAP RING	1	4
C.10335	KEY	1	26
C.10338	GEAR	1	7
C.10339	SHAFT	6	25
C.10342	GEAR ASSEMBLY	6	17
C.10342V	SCREW	6	18
C.10343	GEAR	6	27
C.10343V	SCREW	6	19
C.10345	GEAR ASSEMBLY	6	26
C.10345V	SCREW	6	20
C.10349	DIFFERENTIAL FEED GRADUATION	9	6
C.10351	COVER	9	3
C.10351R	WASHER	9	2
C.10351V	SCREW	9	1
C.10632W	BOBIN HOLDER ASSEMBLY	7	11
C.10656	SPRING	7	4
C.13172	MAIN SHAFT	1	39
C.13173	BUSHING	1	24
C.13173V	SCREW	1	10
C.13174	BUSHING	1	33
C.13174V	SCREW	1	1
C.13175	ECCENTRIC	1	32
C.13175V	SCREW	1	2
C.13176	STOP PLATE	1	3
C.13176V	SCREW	1	30

INDEX

Parts No.	Description.	Page No.	Ref.No
C.13177	CAM ASSEMBLY	1	22
C.13177V	SCREW	1	23
C.13177VP	SCREW	1	11
C.13178	ROLLER	1	14
C.13180	SHAFT	1	20
C.13180V	SCREW	1	21
C.13181	SHAFT	1	13
C.13181V	SCREW	1	12
C.13182	SQUARE CONE SLIDER	1	15
C.13183	SQUARE MITRE-JOINT SLIDER	1	17
C.13184	SQUARE GABE-HOOK SLIDER	1	19
C.13185	SHAFT	4	28
C.13188	CRANK	4	25
C.13188V	SCREW	4	29
C.13206	PULLEY	9	14
C.13206	PULLEY	1	35
C.13206V	SCREW	1	34
C.13206V	SCREW	9	15
C.13295	SHAFT	8	28
C.13295V	SCREW	8	25
C.13296	NUT	2	40
C.13298	PIN	9	13
C.13298E	NUT	9	17
C.13300V	SCREW	9	10
C.13300VC	SCREW	9	19
C.13306	BELT GUARD	9	8
C.13306V	SCREW	9	9
C.13307	COVER	9	12
C.13307V	SCREW	9	16
C.13308	RING	9	7
C.13371	SCREW	8	22
C.13372	SPRING SHAFT	8	16
C.13909	PULLEY HOLDER	1	36
C.13909	PULLEY HOLDER	9	18
C.13909V	SCREW	1	38
C.13909VP	SCREW	1	37
C.13910	MOTOR BASE	9	4
C.13910R	WASHER	9	5
C.CA-26	RUBBER RING	3	49
M10013Z	BELT	9	11
SET C.10266	BUSHING	6	37
SET C.13179	BUSHING	6	35
C.13186	THREAD GUIDE	8	29